

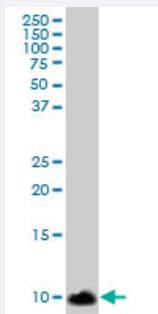
MaxPab®

S100A8 MaxPab mouse polyclonal antibody (B01)

Catalog # H00006279-B01

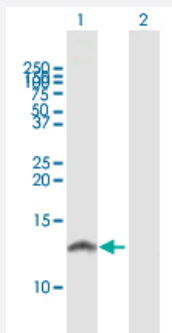
Size 50 uL

Applications



Western Blot (Tissue lysate)

S100A8 MaxPab polyclonal antibody. Western Blot analysis of S100A8 expression in human lung cancer.



Western Blot (Transfected lysate)

Western Blot analysis of S100A8 expression in transfected 293T cell line ([H00006279-T01](#)) by S100A8 MaxPab polyclonal antibody.

Lane1:S100A8 transfected lysate(10.34 KDa).

Lane 2:Non-transfected lysate.

Specification

Product Description	Mouse polyclonal antibody raised against a full-length human S100A8 protein.
Immunogen	S100A8 (AAH05928, 1 a.a. ~ 93 a.a) full-length human protein.
Sequence	MLTELEKALNSIIDVYHKYSLIKGNFHAVYRDDLKLLLETECPQYIRKKGADVWFKELDINTDGAVNF QEFLILVIKMGVAAHKKSHEESHKE
Host	Mouse
Reactivity	Human
Quality Control Testing	Antibody reactive against mammalian transfected lysate.

Storage Buffer

No additive

Storage Instruction

Store at -20°C or lower. Aliquot to avoid repeated freezing and thawing.

Note

For IHC and IF applications, antibody purification with Protein A will be needed prior to use.

Applications

- Western Blot (Tissue lysate)

S100A8 MaxPab polyclonal antibody. Western Blot analysis of S100A8 expression in human lung cancer.

[Protocol Download](#)

- Western Blot (Transfected lysate)

Western Blot analysis of S100A8 expression in transfected 293T cell line ([H00006279-T01](#)) by S100A8 MaxPab polyclonal antibody.

Lane1:S100A8 transfected lysate(10.34 KDa).

Lane 2:Non-transfected lysate.

[Protocol Download](#)

Gene Info — S100A8

Entrez GeneID[6279](#)**GeneBank Accession#**[BC005928](#)**Protein Accession#**[AAH05928](#)**Gene Name**

S100A8

Gene Alias

60B8AG, CAGA, CFAG, CGLA, CP-10, L1Ag, MA387, MIF, MRP8, NIF, P8

Gene Description

S100 calcium binding protein A8

Omim ID[123885](#)**Gene Ontology**[Hyperlink](#)

Gene Summary

The protein encoded by this gene is a member of the S100 family of proteins containing 2 EF-hand calcium-binding motifs. S100 proteins are localized in the cytoplasm and/or nucleus of a wide range of cells, and involved in the regulation of a number of cellular processes such as cell cycle progression and differentiation. S100 genes include at least 13 members which are located as a cluster on chromosome 1q21. This protein may function in the inhibition of casein kinase and as a cytokine. Altered expression of this protein is associated with the disease cystic fibrosis. [provided by RefSeq]

Other Designations

OTTHUMP00000015329|OTTHUMP00000015330|S100 calcium-binding protein A8|S100 calcium-binding protein A8 (calgranulin A)|calgranulin A|cystic fibrosis antigen

Disease

- [Aggressive Periodontitis](#)
- [Dermatitis](#)
- [Genetic Predisposition to Disease](#)
- [Kidney Calculi](#)
- [Periodontitis](#)