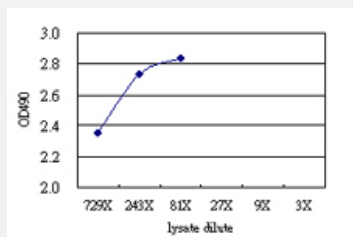


# S100A8 (Human) Matched Antibody Pair

Catalog # H00006279-AP52

Size 1 Set

## Applications



Sandwich ELISA detection sensitivity ranging from approximately 729x to 3x dilution of the S100A8 293T overexpression lysate (non-denatured).

## Specification

### Product Description

This antibody pair set comes with a matched antibody pair to detect and quantify the protein level of human S100A8.

### Reactivity

Human

### Quality Control Testing

Standard curve using S100A8 293T overexpression lysate (non-denatured) as an analyte. Sandwich ELISA detection sensitivity ranging from approximately 729x to 3x dilution of the S100A8 293T overexpression lysate (non-denatured).

### Supplied Product

Antibody pair set content:  
 1. Capture antibody: mouse monoclonal anti-S100A8 (100 ug)  
 2. Detection antibody: rabbit purified polyclonal anti-S100A8 (50 ug)  
 \*Reagents are sufficient for at least 3-5 x 96 well plates using recommended protocols.

### Storage Instruction

Store reagents of the antibody pair set at -20°C or lower. Please aliquot to avoid repeated freeze thaw cycle. Reagents should be returned to -20°C storage immediately after use.

## Applications

- ELISA Pair (Transfected lysate)

[Protocol Download](#)

## Gene Info — S100A8

|                    |   |
|--------------------|---|
| Entrez GeneID      | <a href="#">6279</a>  |
| Gene Name          | S100A8  |
| Gene Alias         | 60B8AG, CAGA, CFAG, CGLA, CP-10, L1Ag, MA387, MIF, MRP8, NIF, P8  |
| Gene Description   | S100 calcium binding protein A8   |
| Omim ID            | <a href="#">123885</a>  |
| Gene Ontology      | <a href="#">Hyperlink</a>   |
| Gene Summary       | The protein encoded by this gene is a member of the S100 family of proteins containing 2 EF-hand calcium-binding motifs. S100 proteins are localized in the cytoplasm and/or nucleus of a wide range of cells, and involved in the regulation of a number of cellular processes such as cell cycle progression and differentiation. S100 genes include at least 13 members which are located as a cluster on chromosome 1q21. This protein may function in the inhibition of casein kinase and as a cytokine. Altered expression of this protein is associated with the disease cystic fibrosis. [provided by RefSeq] |
| Other Designations | OTTHUMP00000015329 OTTHUMP00000015330 S100 calcium-binding protein A8 S100 calcium-binding protein A8 (calgranulin A) calgranulin A cystic fibrosis antigen   |

## Disease

- [Aggressive Periodontitis](#)
- [Dermatitis](#)
- [Genetic Predisposition to Disease](#)
- [Kidney Calculi](#)
- [Periodontitis](#)