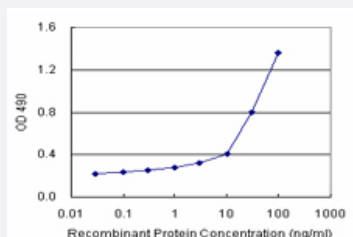


# S100A8 (Human) Matched Antibody Pair

Catalog # H00006279-AP11

Size 1 Set

## Applications



Sandwich ELISA detection sensitivity ranging from 0.3 ng/ml to 100 ng/ml.

## Specification

<b>Product Description</b>	This antibody pair set comes with a matched antibody pair to detect and quantify the protein level of human S100A8.
<b>Reactivity</b>	Human
<b>Quality Control Testing</b>	Standard curve using recombinant protein ( H00006279-P01 ) as an analyte. Sandwich ELISA detection sensitivity ranging from 0.3 ng/ml to 100 ng/ml.
<b>Supplied Product</b>	Antibody pair set content: 1. Capture antibody: rabbit MaxPab® affinity purified polyclonal anti-S100A8 (100 ug) 2. Detection antibody: mouse monoclonal anti-S100A8, IgG2a Kappa (20 ug) *Reagents are sufficient for at least 1-2 x 96 well plates using recommended protocols.
<b>Storage Instruction</b>	Store reagents of the antibody pair set at -20°C or lower. Please aliquot to avoid repeated freeze thaw cycle. Reagents should be returned to -20°C storage immediately after use.

## Applications

- ELISA Pair (Recombinant protein)

[Protocol Download](#)

## Gene Info — S100A8

Entrez GeneID	<a href="#">6279</a>
Gene Name	S100A8
Gene Alias	60B8AG, CAGA, CFAG, CGLA, CP-10, L1Ag, MA387, MIF, MRP8, NIF, P8
Gene Description	S100 calcium binding protein A8
Omim ID	<a href="#">123885</a>
Gene Ontology	<a href="#">Hyperlink</a>
Gene Summary	<p>The protein encoded by this gene is a member of the S100 family of proteins containing 2 EF-hand calcium-binding motifs. S100 proteins are localized in the cytoplasm and/or nucleus of a wide range of cells, and involved in the regulation of a number of cellular processes such as cell cycle progression and differentiation. S100 genes include at least 13 members which are located as a cluster on chromosome 1q21. This protein may function in the inhibition of casein kinase and as a cytokine. Altered expression of this protein is associated with the disease cystic fibrosis. [provided by RefSeq]</p>
Other Designations	OTTHUMP00000015329 OTTHUMP00000015330 S100 calcium-binding protein A8 S100 calcium-binding protein A8 (calgranulin A) calgranulin A cystic fibrosis antigen

## Disease

- [Aggressive Periodontitis](#)
- [Dermatitis](#)
- [Genetic Predisposition to Disease](#)
- [Kidney Calculi](#)
- [Periodontitis](#)