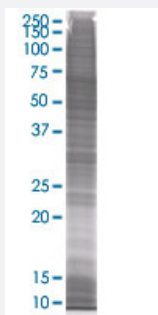


# S100A7 293T Cell Transient Overexpression Lysate(Denatured)

Catalog # H00006278-T01

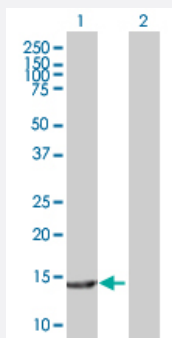
Size 100 uL

## Applications



### SDS-PAGE Gel

S100A7 transfected lysate



### Western Blot

Lane 1: S100A7 transfected lysate ( 11.22 KDa).

Lane 2: Non-transfected lysate.

## Specification

**Transfected Cell Line** 293T

**Plasmid** pCMV-S100A7 full-length

**Host** Human

**Theoretical MW (kDa)** 11.22

**Quality Control Testing** Transient overexpression cell lysate was tested with Anti-S100A7 antibody ([H00006278-B01](#)) by Western Blots.  
SDS-PAGE Gel  
S100A7 transfected lysate  
Western Blot  
Lane 1: S100A7 transfected lysate ( 11.22 KDa).  
Lane 2: Non-transfected lysate.

**Storage Buffer**

1X Sample Buffer (50 mM Tris-HCl, 2% SDS, 10% glycerol, 300 mM 2-mercaptoethanol, 0.01% Bromophenol blue)

**Storage Instruction**

Store at -80°C. Aliquot to avoid repeated freezing and thawing.

## Applications

- Western Blot

## Gene Info — S100A7

**Entrez GeneID**[6278](#)**GeneBank Accession#**[BC034687](#)**Protein Accession#**[AAH34687](#)**Gene Name**

S100A7

**Gene Alias**

PSOR1, S100A7c

**Gene Description**

S100 calcium binding protein A7

**Omim ID**[600353](#)**Gene Ontology**[Hyperlink](#)**Gene Summary**

The protein encoded by this gene is a member of the S100 family of proteins containing 2 EF-hand calcium-binding motifs. S100 proteins are localized in the cytoplasm and/or nucleus of a wide range of cells, and involved in the regulation of a number of cellular processes such as cell cycle progression and differentiation. S100 genes include at least 13 members which are located as a cluster on chromosome 1q21. This protein differs from the other S100 proteins of known structure in its lack of calcium binding ability in one EF-hand at the N-terminus. This protein is markedly over-expressed in the skin lesions of psoriatic patients, but is excluded as a candidate gene for familial psoriasis susceptibility. The exact function of this protein is not known. [provided by RefSeq]

**Other Designations**

OTTHUMP00000015327|OTTHUMP00000015328|S100 calcium-binding protein A7 (psoriasin 1)|psoriasin 1

## Disease

- [Dermatitis](#)
- [Genetic Predisposition to Disease](#)

- [Ovarian Neoplasms](#)
- [Rhinitis](#)