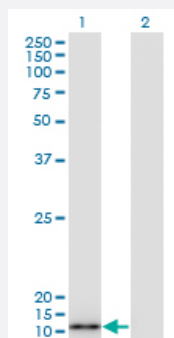


# S100A7 monoclonal antibody (M07), clone 3E11

Catalog # H00006278-M07

Size 50 ug

## Applications

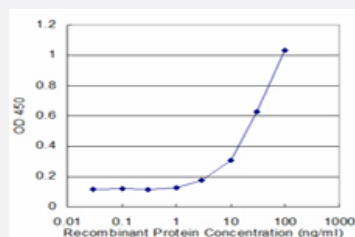


### Western Blot (Transfected lysate)

Western Blot analysis of S100A7 expression in transfected 293T cell line by S100A7 monoclonal antibody (M07), clone 3E11.

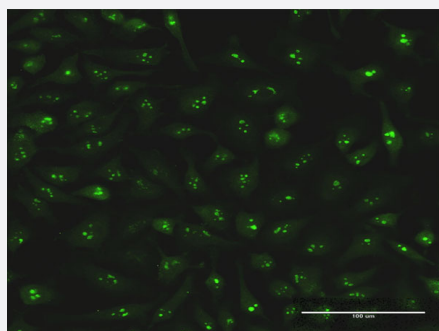
Lane 1: S100A7 transfected lysate(11.5 KDa).

Lane 2: Non-transfected lysate.



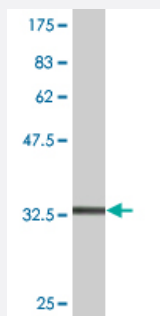
### Sandwich ELISA (Recombinant protein)

Detection limit for recombinant GST tagged S100A7 is approximately 3ng/ml as a capture antibody.



### Immunofluorescence

Immunofluorescence of monoclonal antibody to S100A7 on HeLa cell .  
[antibody concentration 10 ug/ml]



Western Blot detection against Immunogen (36.85 KDa) .

## Specification

<b>Product Description</b>	Mouse monoclonal antibody raised against a full-length recombinant S100A7.
<b>Immunogen</b>	S100A7 (AAH34687.1, 1 a.a. ~ 101 a.a) full-length recombinant protein with GST tag. MW of the GST tag alone is 26 KDa.
<b>Sequence</b>	MSNTQAERSIIGMIDMFHKYTRDDKIDKPSLLTMMKENFPNFLSACDKKGTNYLADVFEKKDKNE DKKIDFSEFLSLLGDIATDYHKQSHGAAPCSGGSQ
<b>Host</b>	Mouse
<b>Reactivity</b>	Human
<b>Isotype</b>	IgG2b Kappa
<b>Quality Control Testing</b>	Antibody Reactive Against Recombinant Protein. Western Blot detection against Immunogen (36.85 KDa) .
<b>Storage Buffer</b>	In 1x PBS, pH 7.4
<b>Storage Instruction</b>	Store at -20°C or lower. Aliquot to avoid repeated freezing and thawing.

## Applications

- Western Blot (Transfected lysate)

Western Blot analysis of S100A7 expression in transfected 293T cell line by S100A7 monoclonal antibody (M07), clone 3E11.

Lane 1: S100A7 transfected lysate(11.5 KDa).

Lane 2: Non-transfected lysate.

[Protocol Download](#)

- Western Blot (Recombinant protein)

[Protocol Download](#)

- Sandwich ELISA (Recombinant protein)

Detection limit for recombinant GST tagged S100A7 is approximately 3ng/ml as a capture antibody.

[Protocol Download](#)

- ELISA

- Immunofluorescence

Immunofluorescence of monoclonal antibody to S100A7 on HeLa cell . [antibody concentration 10 ug/ml]

## Gene Info — S100A7

Entrez GeneID [6278](#)

GeneBank Accession# [BC034687.1](#)

Protein Accession# [AAH34687.1](#)

Gene Name S100A7

Gene Alias PSOR1, S100A7c

Gene Description S100 calcium binding protein A7

Omim ID [600353](#)

Gene Ontology [Hyperlink](#)

**Gene Summary** The protein encoded by this gene is a member of the S100 family of proteins containing 2 EF-hand calcium-binding motifs. S100 proteins are localized in the cytoplasm and/or nucleus of a wide range of cells, and involved in the regulation of a number of cellular processes such as cell cycle progression and differentiation. S100 genes include at least 13 members which are located as a cluster on chromosome 1q21. This protein differs from the other S100 proteins of known structure in its lack of calcium binding ability in one EF-hand at the N-terminus. This protein is markedly over-expressed in the skin lesions of psoriatic patients, but is excluded as a candidate gene for familial psoriasis susceptibility. The exact function of this protein is not known. [provided by RefSeq]

**Other Designations** OTTHUMP00000015327|OTTHUMP00000015328|S100 calcium-binding protein A7 (psoriasin 1)|psoriasin 1

## Disease

- [Dermatitis](#)
- [Genetic Predisposition to Disease](#)

- [Ovarian Neoplasms](#)
- [Rhinitis](#)