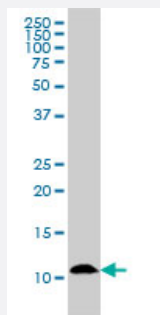


S100A7 monoclonal antibody (M02), clone 1A4

Catalog # H00006278-M02

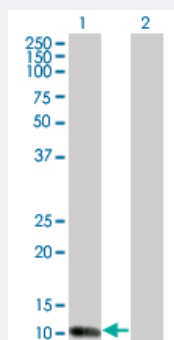
Size 50 ug

Applications



Western Blot (Cell lysate)

S100A7 monoclonal antibody (M02), clone 1A4 Western Blot analysis of S100A7 expression in A-431 (Cat # L015V1).

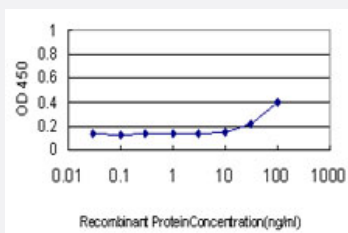


Western Blot (Transfected lysate)

Western Blot analysis of S100A7 expression in transfected 293T cell line by S100A7 monoclonal antibody (M02), clone 1A4.

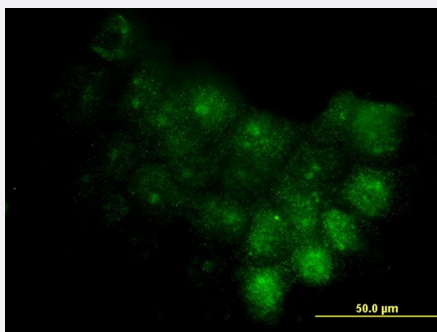
Lane 1: S100A7 transfected lysate(11.457 KDa).

Lane 2: Non-transfected lysate.



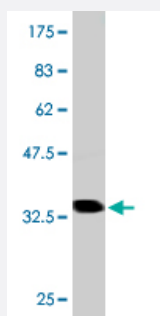
Sandwich ELISA (Recombinant protein)

Detection limit for recombinant GST tagged S100A7 is approximately 10ng/ml as a capture antibody.



Immunofluorescence

Immunofluorescence of monoclonal antibody to S100A7 on A-431 cell.
[antibody concentration 10 ug/ml]



Western Blot detection against Immunogen (36.85 KDa) .

Specification

Product Description	Mouse monoclonal antibody raised against a full-length recombinant S100A7.
Immunogen	S100A7 (AAH34687.1, 1 a.a. ~ 101 a.a) full-length recombinant protein with GST tag. MW of the GST tag alone is 26 KDa.
Sequence	MSNTQAERSIIGMIDMFHKYTRDDKIDKPSLLTMMKENFPNFLSACDKKGTNYLADVFEKKDKNE DKKIDFSEFLSLLGDIATDYHKQSHGAAPCSGGSQ
Host	Mouse
Reactivity	Human
Isotype	IgG1 Kappa
Quality Control Testing	Antibody Reactive Against Recombinant Protein. Western Blot detection against Immunogen (36.85 KDa) .
Storage Buffer	In 1x PBS, pH 7.4
Storage Instruction	Store at -20°C or lower. Aliquot to avoid repeated freezing and thawing.

Applications

- Western Blot (Cell lysate)

S100A7 monoclonal antibody (M02), clone 1A4 Western Blot analysis of S100A7 expression in A-431 (Cat # L015V1).

[Protocol Download](#)

- Western Blot (Transfected lysate)

Western Blot analysis of S100A7 expression in transfected 293T cell line by S100A7 monoclonal antibody (M02), clone 1A4.

Lane 1: S100A7 transfected lysate(11.457 KDa).

Lane 2: Non-transfected lysate.

[Protocol Download](#)

- Western Blot (Recombinant protein)

[Protocol Download](#)

- Sandwich ELISA (Recombinant protein)

Detection limit for recombinant GST tagged S100A7 is approximately 10ng/ml as a capture antibody.

[Protocol Download](#)

- ELISA

- Immunofluorescence

Immunofluorescence of monoclonal antibody to S100A7 on A-431 cell. [antibody concentration 10 ug/ml]

Gene Info — S100A7

Entrez GeneID	6278
---------------	----------------------

GeneBank Accession#	BC034687.1
---------------------	----------------------------

Protein Accession#	AAH34687.1
--------------------	----------------------------

Gene Name	S100A7
-----------	--------

Gene Alias	PSOR1, S100A7c
------------	----------------

Gene Description	S100 calcium binding protein A7
------------------	---------------------------------

Omim ID	600353
---------	------------------------

Gene Ontology	Hyperlink
---------------	---------------------------

Gene Summary

The protein encoded by this gene is a member of the S100 family of proteins containing 2 EF-hand calcium-binding motifs. S100 proteins are localized in the cytoplasm and/or nucleus of a wide range of cells, and involved in the regulation of a number of cellular processes such as cell cycle progression and differentiation. S100 genes include at least 13 members which are located as a cluster on chromosome 1q21. This protein differs from the other S100 proteins of known structure in its lack of calcium binding ability in one EF-hand at the N-terminus. This protein is markedly over-expressed in the skin lesions of psoriatic patients, but is excluded as a candidate gene for familial psoriasis susceptibility. The exact function of this protein is not known. [provided by RefSeq]

Other Designations

OTTHUMP00000015327|OTTHUMP00000015328|S100 calcium-binding protein A7 (psoriasin 1)|psoriasin 1

Disease

- [Dermatitis](#)
- [Genetic Predisposition to Disease](#)
- [Ovarian Neoplasms](#)
- [Rhinitis](#)