

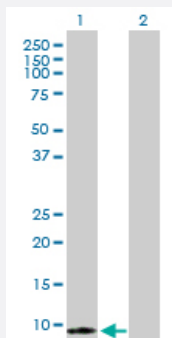
MaxPab®

S100A7 purified MaxPab rabbit polyclonal antibody (D03P)

Catalog # H00006278-D03P

Size 100 ug

Applications

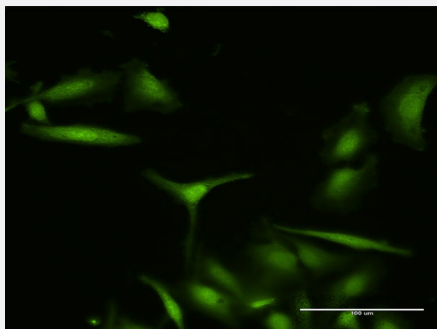


Western Blot (Transfected lysate)

Western Blot analysis of S100A7 expression in transfected 293T cell line ([H00006278-T01](#)) by S100A7 MaxPab polyclonal antibody.

Lane 1: S100A7 transfected lysate(11.22 KDa).

Lane 2: Non-transfected lysate.



Immunofluorescence

Immunofluorescence of purified MaxPab antibody to S100A7 on HeLa cell. [antibody concentration 20 ug/ml]

Specification

Product Description	Rabbit polyclonal antibody raised against a full-length human S100A7 protein.
Immunogen	S100A7 (AAH34687.1, 1 a.a. ~ 101 a.a) full-length human protein.
Sequence	MSNTQAERSIIGMIDMFHKYTRDDKIDKPSLLTMMKENFPNFLSACDKKGTNYLADVFEKKDKNE DKKIDFSEFLSLLGDIATDYHKQSHGAAPCSGGSQ
Host	Rabbit
Reactivity	Human
Quality Control Testing	Antibody reactive against mammalian transfected lysate.

Storage Buffer

In 1x PBS, pH 7.4

Storage Instruction

Store at -20°C or lower. Aliquot to avoid repeated freezing and thawing.

Applications

- Western Blot (Transfected lysate)

Western Blot analysis of S100A7 expression in transfected 293T cell line ([H00006278-T01](#)) by S100A7 MaxPab polyclonal antibody.

Lane 1: S100A7 transfected lysate(11.22 KDa).

Lane 2: Non-transfected lysate.

[Protocol Download](#)

- Immunofluorescence

Immunofluorescence of purified MaxPab antibody to S100A7 on HeLa cell. [antibody concentration 20 ug/ml]

Gene Info — S100A7

Entrez GeneID

[6278](#)

GeneBank Accession#

[BC034687](#)

Protein Accession#

[AAH34687](#)

Gene Name

S100A7

Gene Alias

PSOR1, S100A7c

Gene Description

S100 calcium binding protein A7

Omim ID

[600353](#)

Gene Ontology

[Hyperlink](#)

Gene Summary

The protein encoded by this gene is a member of the S100 family of proteins containing 2 EF-hand calcium-binding motifs. S100 proteins are localized in the cytoplasm and/or nucleus of a wide range of cells, and involved in the regulation of a number of cellular processes such as cell cycle progression and differentiation. S100 genes include at least 13 members which are located as a cluster on chromosome 1q21. This protein differs from the other S100 proteins of known structure in its lack of calcium binding ability in one EF-hand at the N-terminus. This protein is markedly over-expressed in the skin lesions of psoriatic patients, but is excluded as a candidate gene for familial psoriasis susceptibility. The exact function of this protein is not known. [provided by RefSeq]

Other Designations

OTTHUMP00000015327|OTTHUMP00000015328|S100 calcium-binding protein A7 (psoriasin 1)
)|psoriasin 1

Disease

- [Dermatitis](#)
- [Genetic Predisposition to Disease](#)
- [Ovarian Neoplasms](#)
- [Rhinitis](#)