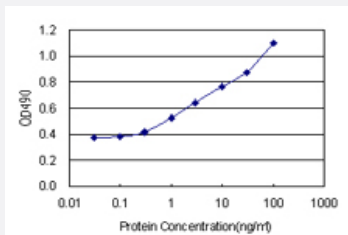


# S100A7 (Human) Matched Antibody Pair

Catalog # H00006278-AP23

Size 1 Set

## Applications



Sandwich ELISA detection sensitivity ranging from 0.3 ng/ml to 100 ng/ml.

## Specification

<b>Product Description</b>	This antibody pair set comes with a matched antibody pair to detect and quantify the protein level of human S100A7.
<b>Reactivity</b>	Human
<b>Quality Control Testing</b>	Standard curve using recombinant protein ( H00006278-P01 ) as an analyte. Sandwich ELISA detection sensitivity ranging from 0.3 ng/ml to 100 ng/ml.
<b>Supplied Product</b>	Antibody pair set content: 1. Capture antibody: rabbit MaxPab® affinity purified polyclonal anti-S100A7 (100 ug) 2. Detection antibody: mouse purified polyclonal anti-S100A7 (20 ug) *Reagents are sufficient for at least 1-2 x 96 well plates using recommended protocols.
<b>Storage Instruction</b>	Store reagents of the antibody pair set at -20°C or lower. Please aliquot to avoid repeated freeze thaw cycle. Reagents should be returned to -20°C storage immediately after use.

## Applications

- ELISA Pair (Recombinant protein)

[Protocol Download](#)

## Gene Info — S100A7

**Entrez GeneID** [6278](#)

**Gene Name** S100A7

**Gene Alias** PSOR1, S100A7c

**Gene Description** S100 calcium binding protein A7

**Omim ID** [600353](#)

**Gene Ontology** [Hyperlink](#)

**Gene Summary** The protein encoded by this gene is a member of the S100 family of proteins containing 2 EF-hand calcium-binding motifs. S100 proteins are localized in the cytoplasm and/or nucleus of a wide range of cells, and involved in the regulation of a number of cellular processes such as cell cycle progression and differentiation. S100 genes include at least 13 members which are located as a cluster on chromosome 1q21. This protein differs from the other S100 proteins of known structure in its lack of calcium binding ability in one EF-hand at the N-terminus. This protein is markedly over-expressed in the skin lesions of psoriatic patients, but is excluded as a candidate gene for familial psoriasis susceptibility. The exact function of this protein is not known. [provided by RefSeq]

**Other Designations** OTTHUMP00000015327|OTTHUMP00000015328|S100 calcium-binding protein A7 (psoriasin 1)|psoriasin 1

## Disease

- [Dermatitis](#)
- [Genetic Predisposition to Disease](#)
- [Ovarian Neoplasms](#)
- [Rhinitis](#)