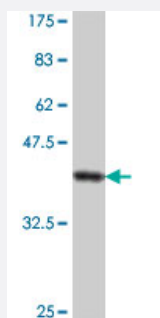


# S100A7 polyclonal antibody (A01)

Catalog # H00006278-A01

Size 50 uL

## Applications



Western Blot detection against Immunogen (37.22 KDa) .

## Specification

<b>Product Description</b>	Mouse polyclonal antibody raised against a full-length recombinant S100A7.
<b>Immunogen</b>	S100A7 (AAH34687.1, 1 a.a. ~ 101 a.a) full-length recombinant protein with GST tag.
<b>Sequence</b>	MSNTQAERSIIGMIDMFHKYTRDDKIDKPSLLTMMKENFPNFLSACDKKGTNYLADVFEKKDKNE DKKIDFSEFLSLLGDIATDYHKQSHGAAPCSGGSQ
<b>Host</b>	Mouse
<b>Reactivity</b>	Human
<b>Quality Control Testing</b>	Antibody Reactive Against Recombinant Protein. Western Blot detection against Immunogen (37.22 KDa) .
<b>Storage Buffer</b>	50 % glycerol
<b>Storage Instruction</b>	Store at -20°C or lower. Aliquot to avoid repeated freezing and thawing.

## Applications

- Western Blot (Recombinant protein)

[Protocol Download](#)

- ELISA

## Gene Info — S100A7

Entrez GeneID [6278](#)

GeneBank Accession# [BC034687.1](#)

Protein Accession# [AAH34687.1](#)

Gene Name S100A7

Gene Alias PSOR1, S100A7c

Gene Description S100 calcium binding protein A7

Omim ID [600353](#)

Gene Ontology [Hyperlink](#)

**Gene Summary** The protein encoded by this gene is a member of the S100 family of proteins containing 2 EF-hand calcium-binding motifs. S100 proteins are localized in the cytoplasm and/or nucleus of a wide range of cells, and involved in the regulation of a number of cellular processes such as cell cycle progression and differentiation. S100 genes include at least 13 members which are located as a cluster on chromosome 1q21. This protein differs from the other S100 proteins of known structure in its lack of calcium binding ability in one EF-hand at the N-terminus. This protein is markedly over-expressed in the skin lesions of psoriatic patients, but is excluded as a candidate gene for familial psoriasis susceptibility. The exact function of this protein is not known. [provided by RefSeq]

**Other Designations** OTTHUMP00000015327|OTTHUMP00000015328|S100 calcium-binding protein A7 (psoriasin 1)|psoriasin 1

## Publication Reference

- [Phosphoproteomic analysis reveals Smad protein family activation following Rift Valley fever virus infection.](#)

de la Fuente C, Pinkham C, Dabbagh D, Beitzel B, Garrison A, Palacios G, Hodge KA, Petricoin EF, Schmaljohn C, Campbell CE, Narayanan A, Kehn-Hall K.

PLoS One 2018 Feb; 13(2):e0191983.

Application: AM, Human, Human small airway epithelial cells

- [The Progesterone Receptor Interactome in the Female Mouse Hypothalamus: Interactions with Synaptic Proteins Are Isoform Specific and Ligand Dependent.](#)

Acharya KD, Nettles SA, Sellers KJ, Im DD, Harling M, Pattanayak C, Vardar-Ulu D, Lichti CF, Huang S, Edwards DP, Srivastava DP, Denner L, Tetel MJ.

eNeuro 2017 Sep; 4(5):ENEURO.027.

Application: Array, Mouse, Mouse brain

- [The heme degradation pathway is a promising serum biomarker source for the early detection of Alzheimer's disease.](#)

Mueller C, Zhou W, Vanmeter A, Heiby M, Magaki S, Ross MM, Espina V, Schrag M, Dickson C, Liotta LA, Kirsch WM.

Journal of Alzheimer's Disease 2010 Jan; 19(3):1081.

Application: Func, Human, Serum

## Disease

- [Dermatitis](#)
- [Genetic Predisposition to Disease](#)
- [Ovarian Neoplasms](#)
- [Rhinitis](#)