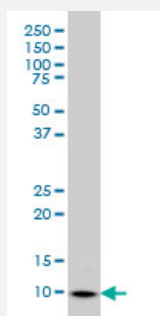


S100A6 monoclonal antibody (M10), clone 6B5

Catalog # H00006277-M10

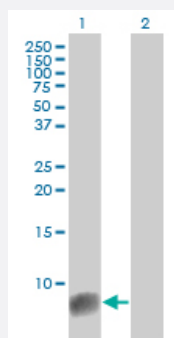
Size 100 ug

Applications



Western Blot (Cell lysate)

S100A6 monoclonal antibody (M10), clone 6B5 Western Blot analysis of S100A6 expression in HeLa (Cat # L013V1).

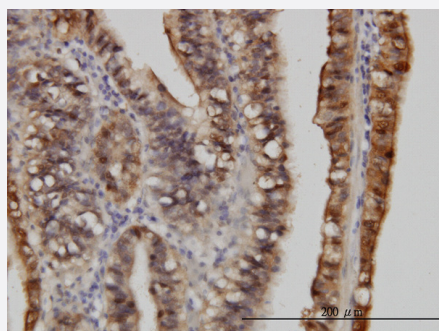


Western Blot (Transfected lysate)

Western Blot analysis of S100A6 expression in transfected 293T cell line by S100A6 monoclonal antibody (M10), clone 6B5.

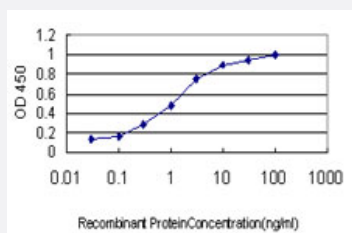
Lane 1: S100A6 transfected lysate(10.2 KDa).

Lane 2: Non-transfected lysate.



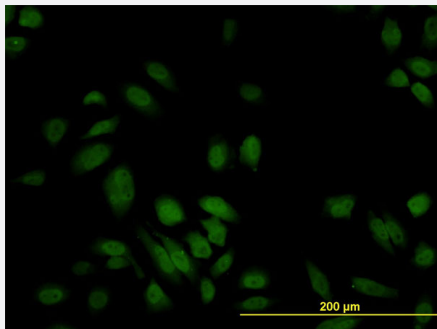
Immunohistochemistry (Formalin/PFA-fixed paraffin-embedded sections)

Immunoperoxidase of monoclonal antibody to S100A6 on formalin-fixed paraffin-embedded human stomach carcinoma. [antibody concentration 3 ug/ml]



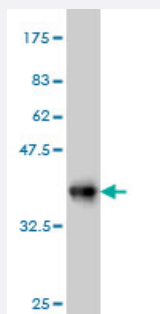
Sandwich ELISA (Recombinant protein)

Detection limit for recombinant GST tagged S100A6 is approximately 0.03ng/ml as a capture antibody.



Immunofluorescence

Immunofluorescence of monoclonal antibody to S100A6 on HeLa cell. [antibody concentration 10 ug/ml]



Western Blot detection against Immunogen (35.64 KDa) .

Specification

Product Description	Mouse monoclonal antibody raised against a full length recombinant S100A6.
Immunogen	S100A6 (AAH01431, 1 a.a. ~ 90 a.a) full-length recombinant protein with GST tag. MW of the GST tag alone is 26 KDa.
Sequence	MACPLDRAIGLLVAIFHKYSGREGDKHTLSKKELKELIQKELTIGSKLQDAEIARLMEDLDRNKDQEVNFQEYVTFLGALALIYNEALKG
Host	Mouse
Reactivity	Human
Interspecies Antigen Sequence	Mouse (96); Rat (94)
Isotype	IgG1 Kappa
Quality Control Testing	Antibody Reactive Against Recombinant Protein. Western Blot detection against Immunogen (35.64 KDa) .
Storage Buffer	In 1x PBS, pH 7.4
Storage Instruction	Store at -20°C or lower. Aliquot to avoid repeated freezing and thawing.

Applications

- Western Blot (Cell lysate)

S100A6 monoclonal antibody (M10), clone 6B5 Western Blot analysis of S100A6 expression in HeLa (Cat # L013V1).

[Protocol Download](#)

- Western Blot (Transfected lysate)

Western Blot analysis of S100A6 expression in transfected 293T cell line by S100A6 monoclonal antibody (M10), clone 6B5.

Lane 1: S100A6 transfected lysate(10.2 KDa).

Lane 2: Non-transfected lysate.

[Protocol Download](#)

- Western Blot (Recombinant protein)

[Protocol Download](#)

- Immunohistochemistry (Formalin/PFA-fixed paraffin-embedded sections)

Immunoperoxidase of monoclonal antibody to S100A6 on formalin-fixed paraffin-embedded human stomach carcinoma.
[antibody concentration 3 ug/ml]

[Protocol Download](#)

- Sandwich ELISA (Recombinant protein)

Detection limit for recombinant GST tagged S100A6 is approximately 0.03ng/ml as a capture antibody.

[Protocol Download](#)

- ELISA

- Immunofluorescence

Immunofluorescence of monoclonal antibody to S100A6 on HeLa cell. [antibody concentration 10 ug/ml]

Gene Info — S100A6

Entrez GeneID [6277](#)

GeneBank Accession# [BC001431](#)

Protein Accession# [AAH01431](#)

Gene Name	S100A6
Gene Alias	2A9, 5B10, CABP, CACY, PRA
Gene Description	S100 calcium binding protein A6
Omim ID	114110
Gene Ontology	Hyperlink
Gene Summary	The protein encoded by this gene is a member of the S100 family of proteins containing 2 EF-hand calcium-binding motifs. S100 proteins are localized in the cytoplasm and/or nucleus of a wide range of cells, and involved in the regulation of a number of cellular processes such as cell cycle progression and differentiation. S100 genes include at least 13 members which are located as a cluster on chromosome 1q21. This protein may function in stimulation of Ca ²⁺ -dependent insulin release, stimulation of prolactin secretion, and exocytosis. Chromosomal rearrangements and altered expression of this gene have been implicated in melanoma. [provided by RefSeq]
Other Designations	OTTHUMP00000015472 OTTHUMP00000015473 S100 calcium-binding protein A6 S100 calcium-binding protein A6 (calcyclin) calcyclin prolactin receptor-associated protein

Publication Reference

- [Identification of novel molecular markers through transcriptomic analysis in human fetal and adult corneal endothelial cells.](#)
Chen Y, Huang K, Nakatsu MN, Xue Z, Deng SX, Fan G.
Human Molecular Genetics 2012 Dec; 22(7):1271.
Application: IF, Human, Adult and fetal cornea tissues
- [S100A expression in normal corneal-limbal epithelial cells and ocular surface squamous cell carcinoma tissue.](#)
Li J, Riau AK, Setiawan M, Mehta JS, Ti SE, Tong L, Tan DT, Beuerman RW.
Molecular Vision 2011 Aug; 17:2263.
Application: IF, Human, Corneal-limbal epithelial cells, Ocular surface squamous cell carcinoma tissues

Disease

- [Alzheimer disease](#)
- [Cardiovascular Diseases](#)
- [Dermatitis](#)
- [Diabetes Complications](#)

- [Genetic Predisposition to Disease](#)
- [Metabolic Syndrome X](#)
- [Neoplasms](#)
- [Osteoporosis](#)