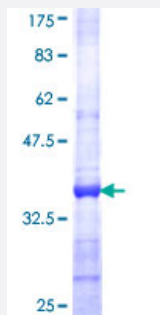


S100A5 (Human) Recombinant Protein (Q01)

Catalog # H00006276-Q01

Size 25 ug, 10 ug

Applications



Specification

Product Description	Human S100A5 partial ORF (NP_002953, 1 a.a. - 90 a.a.) recombinant protein with GST-tag at N-terminal.
Sequence	MPAAWILWAHSHSELHTVMETPLEKALTTMTTFHKYSGREGSKLTLRKELKELIKKELCLGEM KESSIDDLMKSLDKNSDQEIDFKEY
Host	Wheat Germ (in vitro)
Theoretical MW (kDa)	35.64
Interspecies Antigen Sequence	Mouse (93); Rat (93)
Preparation Method	in vitro wheat germ expression system
Purification	Glutathione Sepharose 4 Fast Flow
Quality Control Testing	12.5% SDS-PAGE Stained with Coomassie Blue.
Storage Buffer	50 mM Tris-HCl, 10 mM reduced Glutathione, pH=8.0 in the elution buffer.
Storage Instruction	Store at -80°C. Aliquot to avoid repeated freezing and thawing.
Note	Best use within three months from the date of receipt of this protein.

Applications

- Enzyme-linked Immunoabsorbent Assay
- Western Blot (Recombinant protein)
- Antibody Production
- Protein Array

Gene Info — S100A5

Entrez GeneID [6276](#)

GeneBank Accession# [NM_002962](#)

Protein Accession# [NP_002953](#)

Gene Name S100A5

Gene Alias S100D

Gene Description S100 calcium binding protein A5

Omim ID [176991](#)

Gene Ontology [Hyperlink](#)

Gene Summary

The protein encoded by this gene is a member of the S100 family of proteins containing 2 EF-hand calcium-binding motifs. S100 proteins are localized in the cytoplasm and/or nucleus of a wide range of cells, and involved in the regulation of a number of cellular processes such as cell cycle progression and differentiation. S100 genes include at least 13 members which are located as a cluster on chromosome 1q21. This protein has a Ca²⁺ affinity 20- to 100-fold higher than the other S100 proteins studied under identical conditions. This protein also binds Zn²⁺ and Cu²⁺, and Cu²⁺ strongly which impairs the binding of Ca²⁺. This protein is expressed in very restricted regions of the adult brain. [provided by RefSeq]

Other Designations S100 calcium-binding protein A5

Disease

- [Dermatitis](#)
- [Genetic Predisposition to Disease](#)