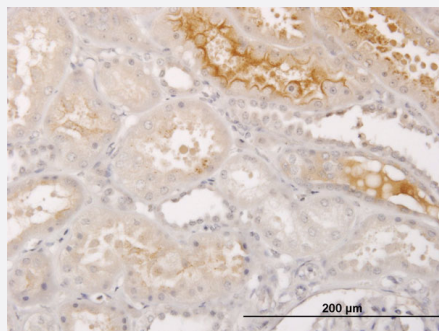


S100A5 monoclonal antibody (M03), clone 5E1

Catalog # H00006276-M03

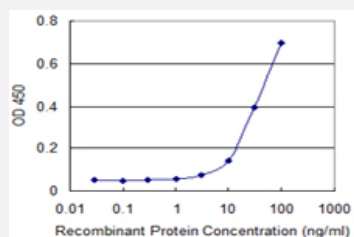
Size 100 ug

Applications



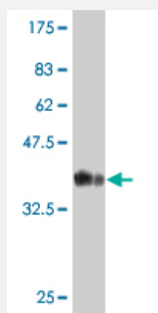
Immunohistochemistry (Formalin/PFA-fixed paraffin-embedded sections)

Immunoperoxidase of monoclonal antibody to S100A5 on formalin-fixed paraffin-embedded human kidney. [antibody concentration 1.5 ug/ml]



Sandwich ELISA (Recombinant protein)

Detection limit for recombinant GST tagged S100A5 is 3 ng/ml as a capture antibody.



Western Blot detection against Immunogen (35.64 KDa) .

Specification

Product Description

Mouse monoclonal antibody raised against a partial recombinant S100A5.

Immunogen	S100A5 (NP_002953, 1 a.a. ~ 90 a.a) partial recombinant protein with GST tag. MW of the GST tag alone is 26 KDa.
Sequence	MPAAWILWAHSHSELHTVMETPLEKALTTMTTFHKYSGREGSKLTLSRKELKELIKKELCLGEM KESSIDDLMKSLDKNSDQEIDFKEY
Host	Mouse
Reactivity	Human
Interspecies Antigen Sequence	Mouse (93); Rat (93)
Isotype	IgG2a Kappa
Quality Control Testing	Antibody Reactive Against Recombinant Protein. Western Blot detection against Immunogen (35.64 KDa) .
Storage Buffer	In 1x PBS, pH 7.4
Storage Instruction	Store at -20°C or lower. Aliquot to avoid repeated freezing and thawing.

Applications

- Western Blot (Recombinant protein)

[Protocol Download](#)

- Immunohistochemistry (Formalin/PFA-fixed paraffin-embedded sections)

Immunoperoxidase of monoclonal antibody to S100A5 on formalin-fixed paraffin-embedded human kidney. [antibody concentration 1.5 ug/ml]

[Protocol Download](#)

- Sandwich ELISA (Recombinant protein)

Detection limit for recombinant GST tagged S100A5 is 3 ng/ml as a capture antibody.

[Protocol Download](#)

- ELISA

Gene Info — S100A5

Entrez GeneID

[6276](#)

GeneBank Accession#	NM_002962
Protein Accession#	NP_002953
Gene Name	S100A5
Gene Alias	S100D
Gene Description	S100 calcium binding protein A5
Omim ID	176991
Gene Ontology	Hyperlink
Gene Summary	<p>The protein encoded by this gene is a member of the S100 family of proteins containing 2 EF-hand calcium-binding motifs. S100 proteins are localized in the cytoplasm and/or nucleus of a wide range of cells, and involved in the regulation of a number of cellular processes such as cell cycle progression and differentiation. S100 genes include at least 13 members which are located as a cluster on chromosome 1q21. This protein has a Ca²⁺ affinity 20- to 100-fold higher than the other S100 proteins studied under identical conditions. This protein also binds Zn²⁺ and Cu²⁺, and Cu²⁺ strongly which impairs the binding of Ca²⁺. This protein is expressed in very restricted regions of the adult brain. [provided by RefSeq]</p>
Other Designations	S100 calcium-binding protein A5

Disease

- [Dermatitis](#)
- [Genetic Predisposition to Disease](#)