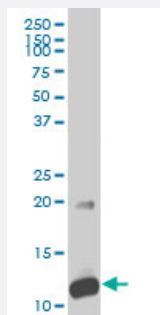


# S100A5 polyclonal antibody (A01)

Catalog # H00006276-A01

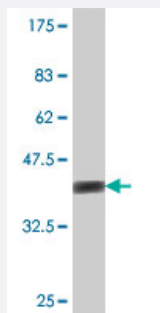
Size 50 uL

## Applications



### Western Blot (Tissue lysate)

S100A5 polyclonal antibody (A01), Lot # 060707JCS1. Western Blot analysis of S100A5 expression in human ovarian cancer.



Western Blot detection against Immunogen (36.01 KDa) .

## Specification

|                               |                                                                                             |
|-------------------------------|---------------------------------------------------------------------------------------------|
| Product Description           | Mouse polyclonal antibody raised against a partial recombinant S100A5.                      |
| Immunogen                     | S100A5 (NP_002953, 1 a.a. ~ 90 a.a) partial recombinant protein with GST tag.               |
| Sequence                      | MPAAWILWAHSHSELHTVMETPLEKALTMTTFHKYSGREGSKLTLRKELKELIKKELCLGEM<br>KESSIDDLMKSLDKNSDQEIDFKEY |
| Host                          | Mouse                                                                                       |
| Reactivity                    | Human                                                                                       |
| Interspecies Antigen Sequence | Mouse (93); Rat (93)                                                                        |

**Quality Control Testing**

Antibody Reactive Against Recombinant Protein.  
Western Blot detection against Immunogen (36.01 KDa) .

**Storage Buffer**

50 % glycerol

**Storage Instruction**

Store at -20°C or lower. Aliquot to avoid repeated freezing and thawing.

## Applications

- Western Blot (Tissue lysate)

S100A5 polyclonal antibody (A01), Lot # 060707JCS1. Western Blot analysis of S100A5 expression in human ovarian cancer.

[Protocol Download](#)

- Western Blot (Recombinant protein)

[Protocol Download](#)

- ELISA

## Gene Info — S100A5

**Entrez GeneID**

[6276](#)

**GeneBank Accession#**

[NM\\_002962](#)

**Protein Accession#**

[NP\\_002953](#)

**Gene Name**

S100A5

**Gene Alias**

S100D

**Gene Description**

S100 calcium binding protein A5

**Omim ID**

[176991](#)

**Gene Ontology**

[Hyperlink](#)

**Gene Summary**

The protein encoded by this gene is a member of the S100 family of proteins containing 2 EF-hand calcium-binding motifs. S100 proteins are localized in the cytoplasm and/or nucleus of a wide range of cells, and involved in the regulation of a number of cellular processes such as cell cycle progression and differentiation. S100 genes include at least 13 members which are located as a cluster on chromosome 1q21. This protein has a  $\text{Ca}^{2+}$  affinity 20- to 100-fold higher than the other S100 proteins studied under identical conditions. This protein also binds  $\text{Zn}^{2+}$  and  $\text{Cu}^{2+}$ , and  $\text{Cu}^{2+}$  strongly which impairs the binding of  $\text{Ca}^{2+}$ . This protein is expressed in very restricted regions of the adult brain. [provided by RefSeq]

**Other Designations**

S100 calcium-binding protein A5

**Disease**

- [Dermatitis](#)
- [Genetic Predisposition to Disease](#)