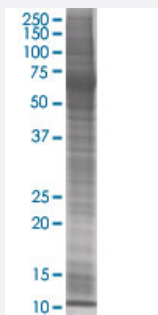


# S100A4 293T Cell Transient Overexpression Lysate(Denatured)

Catalog # H00006275-T01

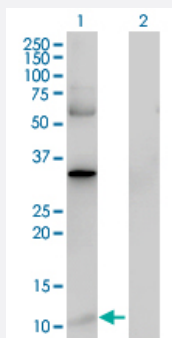
Size 100 uL

## Applications



### SDS-PAGE Gel

S100A4 transfected lysate



### Western Blot

Lane 1: S100A4 transfected lysate ( 11.22 KDa).

Lane 2: Non-transfected lysate.

## Specification

**Transfected Cell Line** 293T

**Plasmid** pCMV-S100A4 full-length

**Host** Human

**Theoretical MW (kDa)** 11.22

**Quality Control Testing** Transient overexpression cell lysate was tested with Anti-S100A4 antibody ([H00006275-B01](#)) by Western Blots.  
SDS-PAGE Gel  
S100A4 transfected lysate  
Western Blot  
Lane 1: S100A4 transfected lysate ( 11.22 KDa).  
Lane 2: Non-transfected lysate.

Storage Buffer	1X Sample Buffer (50 mM Tris-HCl, 2% SDS, 10% glycerol, 300 mM 2-mercaptoethanol, 0.01% Bromophenol blue)
Storage Instruction	Store at -80°C. Aliquot to avoid repeated freezing and thawing.

## Applications

- Western Blot

## Gene Info — S100A4

Entrez GeneID	<a href="#">6275</a>
GeneBank Accession#	<a href="#">BC016300</a>
Protein Accession#	<a href="#">AAH16300</a>
Gene Name	S100A4
Gene Alias	18A2, 42A, CAPL, FSP1, MTS1, P9KA, PEL98
Gene Description	S100 calcium binding protein A4
Omim ID	<a href="#">114210</a>
Gene Ontology	<a href="#">Hyperlink</a>
Gene Summary	<p>The protein encoded by this gene is a member of the S100 family of proteins containing 2 EF-hand calcium-binding motifs. S100 proteins are localized in the cytoplasm and/or nucleus of a wide range of cells, and involved in the regulation of a number of cellular processes such as cell cycle progression and differentiation. S100 genes include at least 13 members which are located as a cluster on chromosome 1q21. This protein may function in motility, invasion, and tubulin polymerization. Chromosomal rearrangements and altered expression of this gene have been implicated in tumor metastasis. Multiple alternatively spliced variants, encoding the same protein, have been identified. [provided by RefSeq]</p>
Other Designations	OTTHUMP00000015467 OTTHUMP00000015468 OTTHUMP00000015469 OTTHUMP00000032895 S100 calcium binding protein A4 (calcium protein, calvasculin, metastasin, murine placental homolog) S100 calcium-binding protein A4 S100 calcium-binding protein A4 (calcium prote

## Disease

- [Dermatitis](#)

- [Genetic Predisposition to Disease](#)
- [Liver Cirrhosis](#)