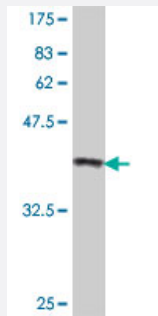


# S100A4 polyclonal antibody (A01)

Catalog # H00006275-A01

Size 50 uL

## Applications



Western Blot detection against Immunogen (37.22 KDa) .

## Specification

<b>Product Description</b>	Mouse polyclonal antibody raised against a full-length recombinant S100A4.
<b>Immunogen</b>	S100A4 (AAH16300, 1 a.a. ~ 101 a.a) full-length recombinant protein with GST tag.
<b>Sequence</b>	MACPLEKALDVMVSTFHKYSGKEGDKFKLNKSELKELLTRELP SFLGKRTDEAAAFQKLMSNLDS NRDNEVDFQEYCVFLSCIAMMCDEFFEGFPDKQPRKK
<b>Host</b>	Mouse
<b>Reactivity</b>	Human
<b>Quality Control Testing</b>	Antibody Reactive Against Recombinant Protein. Western Blot detection against Immunogen (37.22 KDa) .
<b>Storage Buffer</b>	50 % glycerol
<b>Storage Instruction</b>	Store at -20°C or lower. Aliquot to avoid repeated freezing and thawing.

## Applications

- Western Blot (Recombinant protein)

[Protocol Download](#)

- ELISA

## Gene Info — S100A4

Entrez GeneID [6275](#)

GeneBank Accession# [BC016300](#)

Protein Accession# [AAH16300](#)

Gene Name S100A4

Gene Alias 18A2, 42A, CAPL, FSP1, MTS1, P9KA, PEL98

Gene Description S100 calcium binding protein A4

Omim ID [114210](#)

Gene Ontology [Hyperlink](#)

**Gene Summary** The protein encoded by this gene is a member of the S100 family of proteins containing 2 EF-hand calcium-binding motifs. S100 proteins are localized in the cytoplasm and/or nucleus of a wide range of cells, and involved in the regulation of a number of cellular processes such as cell cycle progression and differentiation. S100 genes include at least 13 members which are located as a cluster on chromosome 1q21. This protein may function in motility, invasion, and tubulin polymerization. Chromosomal rearrangements and altered expression of this gene have been implicated in tumor metastasis. Multiple alternatively spliced variants, encoding the same protein, have been identified. [provided by RefSeq]

**Other Designations** OTTHUMP00000015467|OTTHUMP00000015468|OTTHUMP00000015469|OTTHUMP00000032895|S100 calcium binding protein A4 (calcium protein, calvasculin, metastasin, murine placental homolog)|S100 calcium-binding protein A4|S100 calcium-binding protein A4 (calcium prote

## Publication Reference

- [CTGF enhances the motility of breast cancer cells via an integrin-alpha v beta3-ERK1/2-dependent S100A4-upregulated pathway.](#)

Chen PS, Wang MY, Wu SN, Su JL, Hong CC, Chuang SE, Chen MW, Hua KT, Wu YL, Cha ST, Babu MS, Chen CN, Lee PH, Chang KJ, Kuo ML.

Journal of Cell Science 2007 Jun; 120(Pt 12):2053.

Application: WB, Human, MCF-7, MDA-MB-231 cells

## Disease

- [Dermatitis](#)
- [Genetic Predisposition to Disease](#)
- [Liver Cirrhosis](#)