

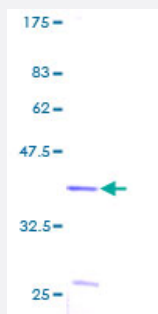
Full-Length

S100A2 (Human) Recombinant Protein (P01)

Catalog # H00006273-P01

Size 25 ug, 10 ug

Applications



Specification

Product Description	Human S100A2 full-length ORF (AAH02829, 1 a.a. - 97 a.a.) recombinant protein with GST-tag at N-terminal.
Sequence	MCSSLEQALAVLVTTTFHKYSCQEGDKFKLSKGEMKELLHKELPSFVGEKVDDEEGLKKLMGSLDENSDQQVDFQEYAVFLALITYMCNDFFQGCPDRP
Host	Wheat Germ (in vitro)
Theoretical MW (kDa)	36.41
Preparation Method	in vitro wheat germ expression system
Purification	Glutathione Sepharose 4 Fast Flow
Quality Control Testing	12.5% SDS-PAGE Stained with Coomassie Blue.
Storage Buffer	50 mM Tris-HCl, 10 mM reduced Glutathione, pH=8.0 in the elution buffer.
Storage Instruction	Store at -80°C. Aliquot to avoid repeated freezing and thawing.
Note	Best use within three months from the date of receipt of this protein.

Applications

- Enzyme-linked Immunoabsorbent Assay
- Western Blot (Recombinant protein)
- Antibody Production
- Protein Array

Gene Info — S100A2

Entrez GeneID	6273
GeneBank Accession#	BC002829
Protein Accession#	AAH02829
Gene Name	S100A2
Gene Alias	CAN19, MGC111539, S100L
Gene Description	S100 calcium binding protein A2
Omim ID	176993
Gene Ontology	Hyperlink
Gene Summary	The protein encoded by this gene is a member of the S100 family of proteins containing 2 EF-hand calcium-binding motifs. S100 proteins are localized in the cytoplasm and/or nucleus of a wide range of cells, and involved in the regulation of a number of cellular processes such as cell cycle progression and differentiation. S100 genes include at least 13 members which are located as a cluster on chromosome 1q21. This protein may have a tumor suppressor function. Chromosomal rearrangements and altered expression of this gene have been implicated in breast cancer. [provided by RefSeq]
Other Designations	OTTHUMP00000032968 OTTHUMP00000032969 S100 calcium-binding protein A2

Disease

- [Carcinoma](#)

- [Dermatitis](#)
- [Genetic Predisposition to Disease](#)
- [Lung Neoplasms](#)
- [Narcolepsy](#)
- [Psoriasis](#)