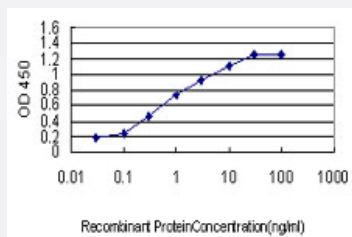


S100A2 monoclonal antibody (M06), clone M2

Catalog # H00006273-M06

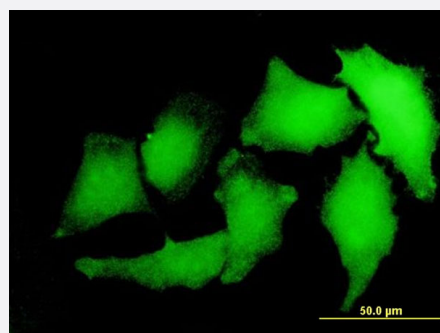
Size 100 ug

Applications



Sandwich ELISA (Recombinant protein)

Detection limit for recombinant GST tagged S100A2 is approximately 0.03ng/ml as a capture antibody.



Immunofluorescence

Immunofluorescence of monoclonal antibody to S100A2 on HeLa cell .
[antibody concentration 10 ug/ml]



Western Blot detection against Immunogen (36.41 KDa) .

Specification

Product Description

Mouse monoclonal antibody raised against a full length recombinant S100A2.

Immunogen	S100A2 (AAH02829, 1 a.a. ~ 97 a.a) full-length recombinant protein with GST tag. MW of the GST tag alone is 26 KDa.
Sequence	MCSSLEQALAVLVTTTFHKYSCQEGDKFKLSKGEMKELLHKELPSFVGEKVDDEEGLKKLMGSLDENSDQQVDFQEYAVFLALITVMCNDFQGCPRP
Host	Mouse
Reactivity	Human
Isotype	IgG2a Kappa
Quality Control Testing	Antibody Reactive Against Recombinant Protein. Western Blot detection against Immunogen (36.41 KDa) .
Storage Buffer	In 1x PBS, pH 7.4
Storage Instruction	Store at -20°C or lower. Aliquot to avoid repeated freezing and thawing.

Applications

- Western Blot (Recombinant protein)

[Protocol Download](#)

- Sandwich ELISA (Recombinant protein)

Detection limit for recombinant GST tagged S100A2 is approximately 0.03ng/ml as a capture antibody.

[Protocol Download](#)

- ELISA

- Immunofluorescence

Immunofluorescence of monoclonal antibody to S100A2 on HeLa cell . [antibody concentration 10 ug/ml]

Gene Info — S100A2

Entrez GeneID	6273
GeneBank Accession#	BC002829
Protein Accession#	AAH02829
Gene Name	S100A2

Gene Alias	CAN19, MGC111539, S100L
Gene Description	S100 calcium binding protein A2
Omim ID	176993
Gene Ontology	Hyperlink
Gene Summary	<p>The protein encoded by this gene is a member of the S100 family of proteins containing 2 EF-hand calcium-binding motifs. S100 proteins are localized in the cytoplasm and/or nucleus of a wide range of cells, and involved in the regulation of a number of cellular processes such as cell cycle progression and differentiation. S100 genes include at least 13 members which are located as a cluster on chromosome 1q21. This protein may have a tumor suppressor function. Chromosomal rearrangements and altered expression of this gene have been implicated in breast cancer. [provided by RefSeq]</p>
Other Designations	OTTHUMP00000032968 OTTHUMP00000032969 S100 calcium-binding protein A2

Disease

- [Carcinoma](#)
- [Dermatitis](#)
- [Genetic Predisposition to Disease](#)
- [Lung Neoplasms](#)
- [Narcolepsy](#)
- [Psoriasis](#)