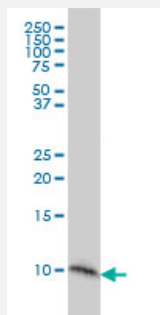


S100A2 monoclonal antibody (M03A), clone 3H8

Catalog # H00006273-M03A

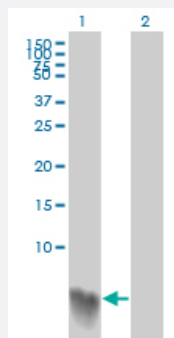
Size 200 uL

Applications



Western Blot (Cell lysate)

S100A2 monoclonal antibody (M03A), clone 3H8 Western Blot analysis of S100A2 expression in A-431 (Cat # L015V1).

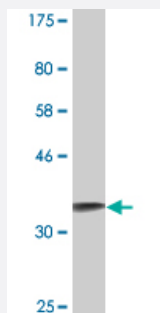


Western Blot (Transfected lysate)

Western Blot analysis of S100A2 expression in transfected 293T cell line by S100A2 monoclonal antibody (M03A), clone 3H8.

Lane 1: S100A2 transfected lysate(11 KDa).

Lane 2: Non-transfected lysate.



Western Blot detection against Immunogen (36.41 KDa) .

Specification

Product Description

Mouse monoclonal antibody raised against a full-length recombinant S100A2.

Immunogen	S100A2 (AAH02829, 1 a.a. ~ 97 a.a) full-length recombinant protein with GST tag. MW of the GST tag alone is 26 KDa.
Sequence	MCSSLEQALAVLVTTFFHKYSCQEGDKFKLSKGEMKELLHKELPSFVGEKVDEEGLKKLMGSLDENSDQQVDFQEYAVFLALITVMCNDFQGCPRP
Host	Mouse
Reactivity	Human
Isotype	IgG2b Kappa
Quality Control Testing	Antibody Reactive Against Recombinant Protein. Western Blot detection against Immunogen (36.41 KDa) .
Storage Buffer	In ascites fluid
Storage Instruction	Store at -20°C or lower. Aliquot to avoid repeated freezing and thawing.

Applications

- Western Blot (Cell lysate)

S100A2 monoclonal antibody (M03A), clone 3H8 Western Blot analysis of S100A2 expression in A-431 (Cat # L015V1).

[Protocol Download](#)

- Western Blot (Transfected lysate)

Western Blot analysis of S100A2 expression in transfected 293T cell line by S100A2 monoclonal antibody (M03A), clone 3H8.

Lane 1: S100A2 transfected lysate(11 KDa).

Lane 2: Non-transfected lysate.

[Protocol Download](#)

- Western Blot (Recombinant protein)

[Protocol Download](#)

- ELISA

Gene Info — S100A2

Entrez GeneID [6273](#)

GeneBank Accession# [BC002829](#)

Protein Accession#	AAH02829
Gene Name	S100A2
Gene Alias	CAN19, MGC111539, S100L
Gene Description	S100 calcium binding protein A2
Omim ID	176993
Gene Ontology	Hyperlink
Gene Summary	The protein encoded by this gene is a member of the S100 family of proteins containing 2 EF-hand calcium-binding motifs. S100 proteins are localized in the cytoplasm and/or nucleus of a wide range of cells, and involved in the regulation of a number of cellular processes such as cell cycle progression and differentiation. S100 genes include at least 13 members which are located as a cluster on chromosome 1q21. This protein may have a tumor suppressor function. Chromosomal rearrangements and altered expression of this gene have been implicated in breast cancer. [provided by RefSeq]
Other Designations	OTTHUMP00000032968 OTTHUMP00000032969 S100 calcium-binding protein A2

Disease

- [Carcinoma](#)
- [Dermatitis](#)
- [Genetic Predisposition to Disease](#)
- [Lung Neoplasms](#)
- [Narcolepsy](#)
- [Psoriasis](#)