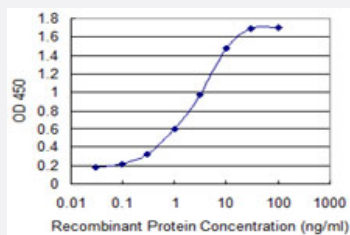


# S100A2 monoclonal antibody (M01), clone 2D10-A3

Catalog # H00006273-M01

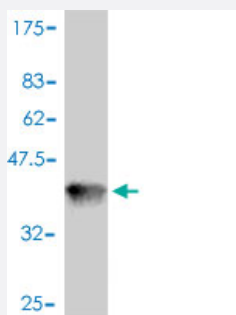
Size 100 ug

## Applications



### Sandwich ELISA (Recombinant protein)

Detection limit for recombinant GST tagged S100A2 is 0.03 ng/ml as a capture antibody.



Western Blot detection against Immunogen (36.41 KDa) .

## Specification

|                     |   |
|---------------------|---|
| Product Description | Mouse monoclonal antibody raised against a full length recombinant S100A2.  |
| Immunogen           | S100A2 (AAH02829, 1 a.a. ~ 97 a.a) full-length recombinant protein with GST tag. MW of the GST tag alone is 26 KDa. |
| Sequence            | MCSSLEQALAVLVTTTFHKYSCQEGDKFKLSKGEMKELLHKELPSFVGEKVDDEGLKKLMGSLDENSDQQVDFQEYAVFLALITVMCNDFQGCPRP                    |
| Host                | Mouse   |
| Reactivity          | Human   |
| Isotype             | IgG2a kappa   |

**Quality Control Testing**

Antibody Reactive Against Recombinant Protein.  
Western Blot detection against Immunogen (36.41 KDa) .

**Storage Buffer**

In 1x PBS, pH 7.4

**Storage Instruction**

Store at -20°C or lower. Aliquot to avoid repeated freezing and thawing.

## Applications

- Western Blot (Recombinant protein)

[Protocol Download](#)

- Sandwich ELISA (Recombinant protein)

Detection limit for recombinant GST tagged S100A2 is 0.03 ng/ml as a capture antibody.

[Protocol Download](#)

- ELISA

## Gene Info — S100A2

**Entrez GeneID**

[6273](#)

**GeneBank Accession#**

[BC002829](#)

**Protein Accession#**

[AAH02829](#)

**Gene Name**

S100A2

**Gene Alias**

CAN19, MGC111539, S100L

**Gene Description**

S100 calcium binding protein A2

**Omim ID**

[176993](#)

**Gene Ontology**

[Hyperlink](#)

**Gene Summary**

The protein encoded by this gene is a member of the S100 family of proteins containing 2 EF-hand calcium-binding motifs. S100 proteins are localized in the cytoplasm and/or nucleus of a wide range of cells, and involved in the regulation of a number of cellular processes such as cell cycle progression and differentiation. S100 genes include at least 13 members which are located as a cluster on chromosome 1q21. This protein may have a tumor suppressor function. Chromosomal rearrangements and altered expression of this gene have been implicated in breast cancer. [provided by RefSeq]

## Other Designations

OTTHUMP00000032968|OTTHUMP00000032969|S100 calcium-binding protein A2

## Disease

- [Carcinoma](#)
- [Dermatitis](#)
- [Genetic Predisposition to Disease](#)
- [Lung Neoplasms](#)
- [Narcolepsy](#)
- [Psoriasis](#)