

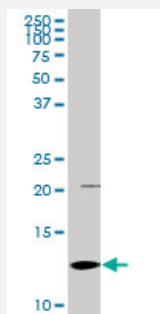
MaxPab®

S100A2 purified MaxPab rabbit polyclonal antibody (D01P)

Catalog # H00006273-D01P

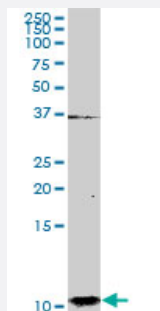
Size 100 ug

Applications



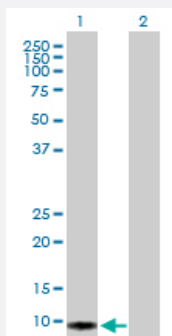
Western Blot (Tissue lysate)

S100A2 MaxPab rabbit polyclonal antibody. Western Blot analysis of S100A2 expression in mouse liver.



Western Blot (Tissue lysate)

S100A2 MaxPab rabbit polyclonal antibody. Western Blot analysis of S100A2 expression in human pancreas.



Western Blot (Transfected lysate)

Western Blot analysis of S100A2 expression in transfected 293T cell line ([H00006273-T01](#)) by S100A2 MaxPab polyclonal antibody.

Lane 1: S100A2 transfected lysate(10.78 KDa).

Lane 2: Non-transfected lysate.

Specification

Product Description

Rabbit polyclonal antibody raised against a full-length human S100A2 protein.

Immunogen	S100A2 (AAH02829, 1 a.a. ~ 97 a.a) full-length human protein.
Sequence	MCSSLEQALAVLVTTTFHKYSCQEGDKFKLSKGEMKELLHKELPSFVGEKVDEEGLKKLMGSLD ENSDQQVDFQEYAVFLALITVMCNDFQGCPRP
Host	Rabbit
Reactivity	Human, Mouse
Quality Control Testing	Antibody reactive against mammalian transfected lysate.
Storage Buffer	In 1x PBS, pH 7.4
Storage Instruction	Store at -20°C or lower. Aliquot to avoid repeated freezing and thawing.

Applications

- Western Blot (Tissue lysate)

S100A2 MaxPab rabbit polyclonal antibody. Western Blot analysis of S100A2 expression in mouse liver.

[Protocol Download](#)

- Western Blot (Tissue lysate)

S100A2 MaxPab rabbit polyclonal antibody. Western Blot analysis of S100A2 expression in human pancreas.

[Protocol Download](#)

- Western Blot (Transfected lysate)

Western Blot analysis of S100A2 expression in transfected 293T cell line ([H00006273-T01](#)) by S100A2 MaxPab polyclonal antibody.

Lane 1: S100A2 transfected lysate(10.78 KDa).

Lane 2: Non-transfected lysate.

[Protocol Download](#)

Gene Info — S100A2

Entrez GeneID	6273
GeneBank Accession#	BC002829
Protein Accession#	AAH02829
Gene Name	S100A2

Gene Alias	CAN19, MGC111539, S100L
Gene Description	S100 calcium binding protein A2
Omim ID	176993
Gene Ontology	Hyperlink
Gene Summary	<p>The protein encoded by this gene is a member of the S100 family of proteins containing 2 EF-hand calcium-binding motifs. S100 proteins are localized in the cytoplasm and/or nucleus of a wide range of cells, and involved in the regulation of a number of cellular processes such as cell cycle progression and differentiation. S100 genes include at least 13 members which are located as a cluster on chromosome 1q21. This protein may have a tumor suppressor function. Chromosomal rearrangements and altered expression of this gene have been implicated in breast cancer. [provided by RefSeq]</p>
Other Designations	OTTHUMP00000032968 OTTHUMP00000032969 S100 calcium-binding protein A2

Disease

- [Carcinoma](#)
- [Dermatitis](#)
- [Genetic Predisposition to Disease](#)
- [Lung Neoplasms](#)
- [Narcolepsy](#)
- [Psoriasis](#)