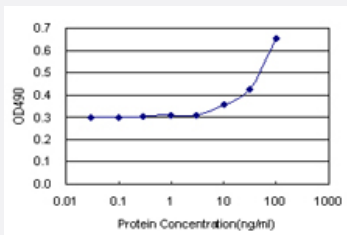


RTN2 (Human) Matched Antibody Pair

Catalog # H00006253-AP11

Size 1 Set

Applications



Sandwich ELISA detection sensitivity ranging from 10 ng/ml to 100 ng/ml.

Specification

Product Description	This antibody pair set comes with a matched antibody pair to detect and quantify the protein level of human RTN2.
Reactivity	Human
Quality Control Testing	Standard curve using recombinant protein (H00006253-P01) as an analyte. Sandwich ELISA detection sensitivity ranging from 10 ng/ml to 100 ng/ml.
Supplied Product	Antibody pair set content: 1. Capture antibody: rabbit MaxPab® affinity purified polyclonal anti-RTN2 (100 ug) 2. Detection antibody: mouse monoclonal anti-RTN2, IgG2a Kappa (20 ug) *Reagents are sufficient for at least 1-2 x 96 well plates using recommended protocols.
Storage Instruction	Store reagents of the antibody pair set at -20°C or lower. Please aliquot to avoid repeated freeze thaw cycle. Reagents should be returned to -20°C storage immediately after use.

Applications

- ELISA Pair (Recombinant protein)

[Protocol Download](#)

Gene Info — RTN2

Entrez GeneID	6253
Gene Name	RTN2
Gene Alias	NSP2, NSPL1
Gene Description	reticulon 2
Omim ID	603183
Gene Ontology	Hyperlink
Gene Summary	This gene belongs to the family of reticulon encoding genes. Reticulons are associated with the endoplasmic reticulum, and are involved in neuroendocrine secretion or in membrane trafficking in neuroendocrine cells. Alternatively spliced transcript variants encoding different isoforms have been identified. [provided by RefSeq]
Other Designations	NSP-like protein 1 Neuroendocrine-specific protein-like 1

Disease

- [Disease Progression](#)
- [Disease Susceptibility](#)
- [HIV Infections](#)