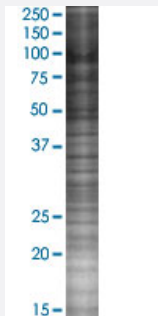


# RSC1A1 293T Cell Transient Overexpression Lysate(Denatured)

Catalog # H00006248-T02

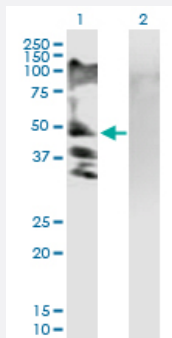
Size 100 uL

## Applications



### SDS-PAGE Gel

RSC1A1 transfected lysate.



### Western Blot

Lane 1: RSC1A1 transfected lysate ( 66.8 KDa)

Lane 2: Non-transfected lysate.

## Specification

Transfected Cell Line	293T
Plasmid	pCMV-RSC1A1 full-length
Host	Human
Theoretical MW (kDa)	66.8
Interspecies Antigen Sequence	Mouse (55)

**Quality Control Testing**

Transient overexpression cell lysate was tested with Anti-RSC1A1 antibody ([H00006248-B01P](#)) by Western Blots.  
SDS-PAGE Gel  
RSC1A1 transfected lysate.  
Western Blot  
Lane 1: RSC1A1 transfected lysate ( 66.8 KDa)  
Lane 2: Non-transfected lysate.

**Storage Buffer**

1X Sample Buffer (50 mM Tris-HCl, 2% SDS, 10% glycerol, 300 mM 2-mercaptoethanol, 0.01% Bromophenol blue)

**Storage Instruction**

Store at -80°C. Aliquot to avoid repeated freezing and thawing.

## Applications

- Western Blot

## Gene Info — RSC1A1

**Entrez GeneID**[6248](#)**GeneBank Accession#**[NM\\_006511.1](#)**Protein Accession#**[NP\\_006502.1](#)**Gene Name**

RSC1A1

**Gene Alias**

RS1

**Gene Description**

regulatory solute carrier protein, family 1, member 1

**Omim ID**[601966](#)**Gene Ontology**[Hyperlink](#)**Gene Summary**

family 1

**Other Designations**

OTTHUMP00000071185