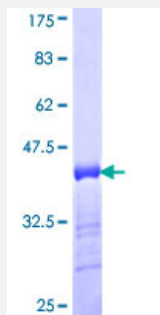


RSC1A1 (Human) Recombinant Protein (Q01)

Catalog # H00006248-Q01

Size 25 ug, 10 ug

Applications



Specification

Product Description	Human RSC1A1 partial ORF (NP_006502, 1 a.a. - 100 a.a.) recombinant protein with GST-tag at N-terminal.
Sequence	MSSLPTSDGFNHPARSSGQSPDVGNPMSLARSVSASVCPKPSDSDRIEPKAVKALKASAEFQL NSEKKEHLSLQDLSDHASSADHAPTDQSPAMPMQNS
Host	Wheat Germ (in vitro)
Theoretical MW (kDa)	36.74
Interspecies Antigen Sequence	Mouse (64)
Preparation Method	in vitro wheat germ expression system
Purification	Glutathione Sepharose 4 Fast Flow
Quality Control Testing	12.5% SDS-PAGE Stained with Coomassie Blue.
Storage Buffer	50 mM Tris-HCl, 10 mM reduced Glutathione, pH=8.0 in the elution buffer.
Storage Instruction	Store at -80°C. Aliquot to avoid repeated freezing and thawing.
Note	Best use within three months from the date of receipt of this protein.

Applications

- Enzyme-linked Immunoabsorbent Assay
- Western Blot (Recombinant protein)
- Antibody Production
- Protein Array

Gene Info — RSC1A1

Entrez GeneID	6248
GeneBank Accession#	NM_006511
Protein Accession#	NP_006502
Gene Name	RSC1A1
Gene Alias	RS1
Gene Description	regulatory solute carrier protein, family 1, member 1
Omim ID	601966
Gene Ontology	Hyperlink
Gene Summary	family 1
Other Designations	OTTHUMP00000071185