

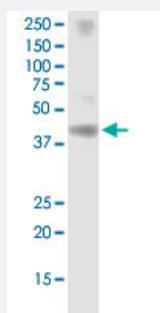
CX Grade

RRM2 monoclonal antibody (M01J), clone 1E1

Catalog # H00006241-M01J

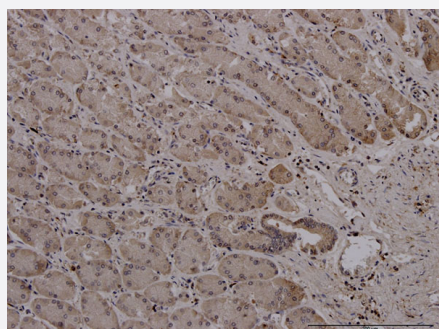
Size 100 ug

Applications



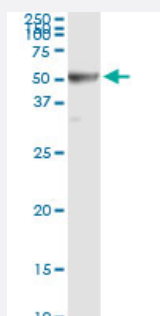
Western Blot (Cell lysate)

RRM2 monoclonal antibody (M01J), clone 1E1. Western Blot analysis of RRM2 expression in HepG2.



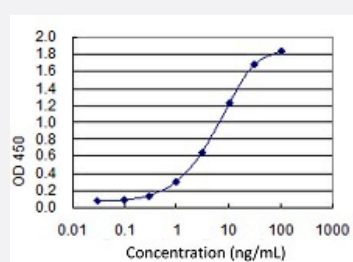
Immunohistochemistry (Formalin/PFA-fixed paraffin-embedded sections)

Immunoperoxidase of monoclonal antibody to RRM2 on formalin-fixed paraffin-embedded human stomach. [antibody concentration 1.5 ug/ml]



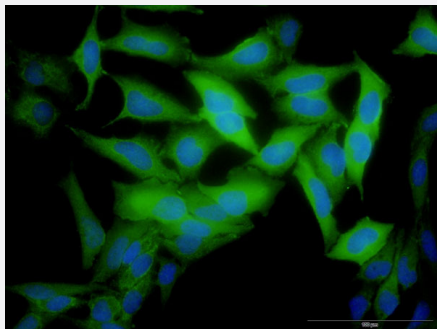
Immunoprecipitation

Immunoprecipitation of RRM2 transfected lysate using anti-RRM2 monoclonal antibody and Protein A Magnetic Bead, and immunoblotted with RRM2 MaxPab rabbit polyclonal antibody.



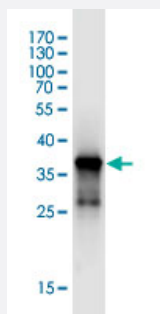
Sandwich ELISA (Recombinant protein)

Detection limit for recombinant GST tagged RRM2 is 0.1 ng/ml as a capture antibody.



Immunofluorescence

Immunofluorescence of monoclonal antibody to RRM2 on HeLa cell . [antibody concentration 10 ug/ml]



Western Blot detection against Immunogen (37.84 KDa) .

Specification

Product Description	Mouse monoclonal antibody raised against a partial recombinant RRM2. This product is belong to Cell Culture Grade Antibody (CX Grade).
Immunogen	RRM2 (NP_001025, 1 a.a. ~ 110 a.a) partial recombinant protein with GST tag. MW of the GST tag alone is 26 KDa.
Sequence	MLSLRVPLAPITDPQQQLQLSPLKGLSLVDKENTPPALSGTRVLASKTARRIFQEPTPKTKAAAPG VEDEPLLRENPRRFVIFPIEYHDWQMYKAEASFWTAEEVDLS
Host	Mouse
Reactivity	Human
Preparation Method	Cell Culture Production
Isotype	IgG1 Kappa
Quality Control Testing	Antibody Reactive Against Recombinant Protein. Western Blot detection against Immunogen (37.84 KDa) .
Storage Buffer	In 1x PBS, pH 7.4
Storage Instruction	Store at -20°C or lower. Aliquot to avoid repeated freezing and thawing.

Applications

- Western Blot (Cell lysate)

RRM2 monoclonal antibody (M01J), clone 1E1. Western Blot analysis of RRM2 expression in HepG2.

[Protocol Download](#)

- Western Blot (Recombinant protein)

[Protocol Download](#)

- Immunohistochemistry (Formalin/PFA-fixed paraffin-embedded sections)

Immunoperoxidase of monoclonal antibody to RRM2 on formalin-fixed paraffin-embedded human stomach. [antibody concentration 1.5 ug/ml]

[Protocol Download](#)

- Immunoprecipitation

Immunoprecipitation of RRM2 transfected lysate using anti-RRM2 monoclonal antibody and Protein A Magnetic Bead, and immunoblotted with RRM2 MaxPab rabbit polyclonal antibody.

[Protocol Download](#)

- Sandwich ELISA (Recombinant protein)

Detection limit for recombinant GST tagged RRM2 is 0.1 ng/ml as a capture antibody.

[Protocol Download](#)

- ELISA

- Immunofluorescence

Immunofluorescence of monoclonal antibody to RRM2 on HeLa cell . [antibody concentration 10 ug/ml]

Gene Info — RRM2

Entrez GeneID	6241
---------------	----------------------

GeneBank Accession#	NM_001034
---------------------	---------------------------

Protein Accession#	NP_001025
--------------------	---------------------------

Gene Name	RRM2
-----------	------

Gene Alias	R2, RR2M
Gene Description	ribonucleotide reductase M2 polypeptide
Omim ID	180390
Gene Ontology	Hyperlink
Gene Summary	<p>This gene encodes one of two non-identical subunits for ribonucleotide reductase. This reductase catalyzes the formation of deoxyribonucleotides from ribonucleotides. Synthesis of the encoded protein (M2) is regulated in a cell-cycle dependent fashion. Transcription from this gene can initiate from alternative promoters, which results in two isoforms that differ in the lengths of their N-termini. Related pseudogenes have been identified on chromosomes 1 and X. [provided by RefSeq</p>
Other Designations	ribonucleotide reductase M2 subunit

Pathway

- [Glutathione metabolism](#)
- [Metabolic pathways](#)
- [p53 signaling pathway](#)
- [Purine metabolism](#)
- [Pyrimidine metabolism](#)

Disease

- [Abortion](#)
- [Adenocarcinoma](#)
- [Genetic Predisposition to Disease](#)
- [Pancreatic Neoplasms](#)