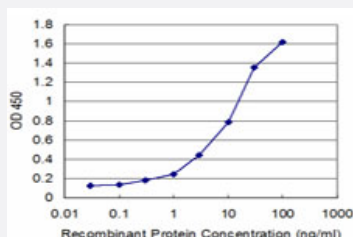


RPS29 monoclonal antibody (M02), clone 3G9

Catalog # H00006235-M02

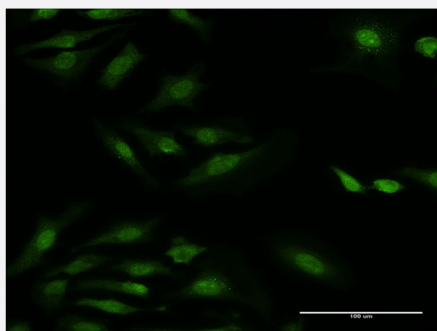
Size 100 ug

Applications



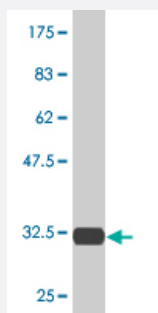
Sandwich ELISA (Recombinant protein)

Detection limit for recombinant GST tagged RPS29 is approximately 0.3ng/ml as a capture antibody.



Immunofluorescence

Immunofluorescence of monoclonal antibody to RPS29 on HeLa cell . [antibody concentration 10 ug/ml]



Western Blot detection against Immunogen (31.9 KDa) .

Specification

Product Description

Mouse monoclonal antibody raised against a partial recombinant RPS29.

Immunogen	RPS29 (NP_001023, 1 a.a. ~ 56 a.a) partial recombinant protein with GST tag. MW of the GST tag alone is 26 KDa.
Sequence	MGHQQLYWSHPRKFGQGSRSCRVC SNRHGLIRKYGLNMCRQC FRQYAKDIGFIKLD
Host	Mouse
Reactivity	Human
Isotype	IgG2a Kappa
Quality Control Testing	Antibody Reactive Against Recombinant Protein. Western Blot detection against Immunogen (31.9 KDa) .
Storage Buffer	In 1x PBS, pH 7.4
Storage Instruction	Store at -20°C or lower. Aliquot to avoid repeated freezing and thawing.

Applications

- Western Blot (Recombinant protein)

[Protocol Download](#)

- Sandwich ELISA (Recombinant protein)

Detection limit for recombinant GST tagged RPS29 is approximately 0.3ng/ml as a capture antibody.

[Protocol Download](#)

- ELISA

- Immunofluorescence

Immunofluorescence of monoclonal antibody to RPS29 on HeLa cell . [antibody concentration 10 ug/ml]

Gene Info — RPS29

Entrez GeneID	6235
GeneBank Accession#	NM_001032
Protein Accession#	NP_001023
Gene Name	RPS29

Gene Alias	-
Gene Description	ribosomal protein S29
Omim ID	603633
Gene Ontology	Hyperlink
Gene Summary	<p>Ribosomes, the organelles that catalyze protein synthesis, consist of a small 40S subunit and a large 60S subunit. Together these subunits are composed of 4 RNA species and approximately 80 structurally distinct proteins. This gene encodes a ribosomal protein that is a component of the 40S subunit and a member of the S14P family of ribosomal proteins. The protein, which contains a C2-C2 zinc finger-like domain that can bind to zinc, can enhance the tumor suppressor activity of Ras-related protein 1A (KREV1). It is located in the cytoplasm. Variable expression of this gene in colorectal cancers compared to adjacent normal tissues has been observed, although no correlation between the level of expression and the severity of the disease has been found. As is typical for genes encoding ribosomal proteins, there are multiple processed pseudogenes of this gene dispersed through the genome. [provided by RefSeq]</p>
Other Designations	40S ribosomal protein S29

Pathway

- [Ribosome](#)