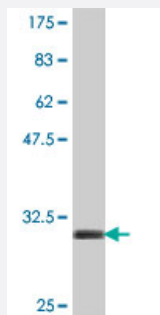


RPS29 polyclonal antibody (A01)

Catalog # H00006235-A01

Size 50 uL

Applications



Western Blot detection against Immunogen (32.27 KDa) .

Specification

Product Description	Mouse polyclonal antibody raised against a partial recombinant RPS29.
Immunogen	RPS29 (NP_001023, 1 a.a. ~ 56 a.a) partial recombinant protein with GST tag.
Sequence	MGHQQLYWSHPRKFGQGSRCRVCSNRHGLIRKYGLNMCRQCFRQYAKDIGFIKLD
Host	Mouse
Reactivity	Human
Quality Control Testing	Antibody Reactive Against Recombinant Protein. Western Blot detection against Immunogen (32.27 KDa) .
Storage Buffer	50 % glycerol
Storage Instruction	Store at -20°C or lower. Aliquot to avoid repeated freezing and thawing.

Applications

- Western Blot (Recombinant protein)

[Protocol Download](#)

- ELISA

Gene Info — RPS29

Entrez GeneID	6235
GeneBank Accession#	NM_001032
Protein Accession#	NP_001023
Gene Name	RPS29
Gene Alias	-
Gene Description	ribosomal protein S29
Omim ID	603633
Gene Ontology	Hyperlink
Gene Summary	<p>Ribosomes, the organelles that catalyze protein synthesis, consist of a small 40S subunit and a large 60S subunit. Together these subunits are composed of 4 RNA species and approximately 80 structurally distinct proteins. This gene encodes a ribosomal protein that is a component of the 40S subunit and a member of the S14P family of ribosomal proteins. The protein, which contains a C2-C2 zinc finger-like domain that can bind to zinc, can enhance the tumor suppressor activity of Ras-related protein 1A (KREV1). It is located in the cytoplasm. Variable expression of this gene in colorectal cancers compared to adjacent normal tissues has been observed, although no correlation between the level of expression and the severity of the disease has been found. As is typical for genes encoding ribosomal proteins, there are multiple processed pseudogenes of this gene dispersed through the genome. [provided by RefSeq]</p>
Other Designations	40S ribosomal protein S29

Pathway

- [Ribosome](#)