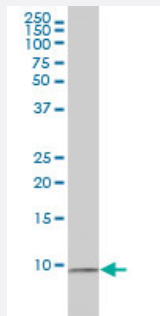


RPS27A monoclonal antibody (M01), clone 3E2-E6

Catalog # H00006233-M01

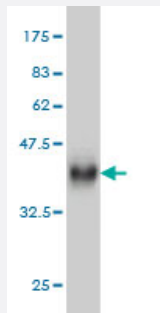
Size 100 ug

Applications



Western Blot (Cell lysate)

RPS27A monoclonal antibody (M01), clone 3E2-E6 Western Blot analysis of RPS27A expression in HL-60 (Cat # L014V1).



Western Blot detection against Immunogen (42.9 KDa) .

Specification

Product Description

Mouse monoclonal antibody raised against a full length recombinant RPS27A.

Immunogen

RPS27A (AAH01392, 1 a.a. ~ 156 a.a) full-length recombinant protein with GST tag. MW of the GST tag alone is 26 KDa.

Sequence

MQIFVKLTGKTTITLEVEPSDTIENVKAKIQDKEGIPPDQQRLIFAGKQLEDGRTLSDYNIQKESTLHL
VLRRLGGAKKRKKKSYTTPKKNKHKRKKVKLAVLKYYKVDENGKISRLRRECPSECGAGVFMA
SHFDRHYCGKCCLTYCFNKPEDK

Host

Mouse

Reactivity

Human

Interspecies Antigen Sequence	Mouse (99)
Isotype	IgG1 Lambda
Quality Control Testing	Antibody Reactive Against Recombinant Protein. Western Blot detection against Immunogen (42.9 KDa) .
Storage Buffer	In 1x PBS, pH 7.4
Storage Instruction	Store at -20°C or lower. Aliquot to avoid repeated freezing and thawing.

Applications

- Western Blot (Cell lysate)

RPS27A monoclonal antibody (M01), clone 3E2-E6 Western Blot analysis of RPS27A expression in HL-60 (Cat # L014V1).

[Protocol Download](#)

- Western Blot (Recombinant protein)

[Protocol Download](#)

- ELISA

Gene Info — RPS27A

Entrez GeneID	6233
GeneBank Accession#	BC001392
Protein Accession#	AAH01392
Gene Name	RPS27A
Gene Alias	CEP80, HUBCEP80, UBA80, UBCEP1, UBCEP80
Gene Description	ribosomal protein S27a
Omim ID	191343
Gene Ontology	Hyperlink

Gene Summary

Ubiquitin, a highly conserved protein that has a major role in targeting cellular proteins for degradation by the 26S proteasome, is synthesized as a precursor protein consisting of either polyubiquitin chains or a single ubiquitin fused to an unrelated protein. This gene encodes a fusion protein consisting of ubiquitin at the N terminus and ribosomal protein S27a at the C terminus. When expressed in yeast, the protein is post-translationally processed, generating free ubiquitin monomer and ribosomal protein S27a. Ribosomal protein S27a is a component of the 40S subunit of the ribosome and belongs to the S27AE family of ribosomal proteins. It contains C4-type zinc finger domains and is located in the cytoplasm. Pseudogenes derived from this gene are present in the genome. As with ribosomal protein S27a, ribosomal protein L40 is also synthesized as a fusion protein with ubiquitin; similarly, ribosomal protein S30 is synthesized as a fusion protein with the ubiquitin-like protein fubi. Multiple alternatively spliced transcript variants that encode the same proteins have been identified.[provided by RefSeq]

Other Designations

40S ribosomal protein S27a|ubiquitin and ribosomal protein S27a|ubiquitin carboxyl extension protein 80|ubiquitin-CEP80

Publication Reference

- [Altered dynamics of ubiquitin hybrid proteins during tumor cell apoptosis.](#)

Han XJ, Lee MJ, Yu GR, Lee ZW, Bae JY, Bae YC, Kang SH, Kim DG.

Cell Death & Disease 2012 Jan; 3:e255.

Application: WB-Ce, Human, Hep3B

- [The HBx protein of hepatitis B virus regulates the expression, intracellular distribution and functions of Ribosomal Protein S27a.](#)

Fatima G, Mathan G, Kumar V.

The Journal of General Virology 2011 Dec; 93(Pt 4):706.

Application: IHC, Mouse, Mouse liver

- [Chemoprevention with Aqueous Extract of Butea monosperma flowers results in normalization of nuclear morphometry and inhibition of a proliferation marker in liver tumors.](#)

Mathan G, Fatima G, Saxena AK, Chandan BK, Jaggi BS, Gupta BD, Qazi GN, Balasundaram C, Anand Rajan KD, Kumar VL, Kumar V.

Phytotherapy Research 2011 Mar; 25(3):324.

Application: IHC-P, Mouse, Liver tumors

Pathway

- [Ribosome](#)