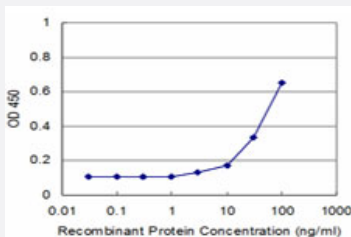


RPS20 monoclonal antibody (M03), clone 1G12

Catalog # H00006224-M03

Size 100 ug

Applications



Sandwich ELISA (Recombinant protein)

Detection limit for recombinant GST tagged RPS20 is approximately 3ng/ml as a capture antibody.

Specification

Product Description	Mouse monoclonal antibody raised against a full-length recombinant RPS20.
Immunogen	RPS20 (AAH07507, 1 a.a. ~ 119 a.a) full-length recombinant protein with GST tag. MW of the GST tag alone is 26 KDa.
Sequence	MAFKDTGKTPVEPEVAIHRIRITLTSRNVKSLEKVCADLIRGAKEKNLKVGPVRMPTKTLRITRKT PCGEGSKTWDRFQMRIHKRLIDLHSPSENVKQITSISIEPGVEVEVTIADA
Host	Mouse
Reactivity	Human
Isotype	IgG2a Kappa
Quality Control Testing	Antibody Reactive Against Recombinant Protein.
Storage Buffer	In 1x PBS, pH 7.4
Storage Instruction	Store at -20°C or lower. Aliquot to avoid repeated freezing and thawing.

Applications

- Sandwich ELISA (Recombinant protein)

Detection limit for recombinant GST tagged RPS20 is approximately 3ng/ml as a capture antibody.

[Protocol Download](#)

- ELISA

Gene Info — RPS20

Entrez GeneID [6224](#)

GeneBank Accession# [BC007507](#)

Protein Accession# [AAH07507](#)

Gene Name RPS20

Gene Alias FLJ27451, MGC102930

Gene Description ribosomal protein S20

Omim ID [603682](#)

Gene Ontology [Hyperlink](#)

Gene Summary Ribosomes, the organelles that catalyze protein synthesis, consist of a small 40S subunit and a large 60S subunit. Together these subunits are composed of 4 RNA species and approximately 80 structurally distinct proteins. This gene encodes a ribosomal protein that is a component of the 40 S subunit. The protein belongs to the S10P family of ribosomal proteins. It is located in the cytoplasm. This gene is co-transcribed with the small nucleolar RNA gene U54, which is located in its second intron. As is typical for genes encoding ribosomal proteins, there are multiple processed pseudogenes of this gene dispersed through the genome. Two transcript variants encoding different isoforms have been identified for this gene. [provided by RefSeq]

Other Designations 40S ribosomal protein S20

Pathway

- [Ribosome](#)

Disease

- [Diabetes Mellitus](#)