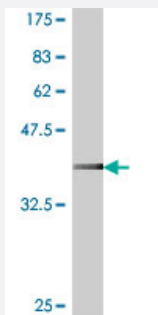


# RPS20 polyclonal antibody (A01)

Catalog # H00006224-A01

Size 50 uL

## Applications



Western Blot detection against Immunogen (37.11 KDa) .

## Specification

<b>Product Description</b>	Mouse polyclonal antibody raised against a partial recombinant RPS20.
<b>Immunogen</b>	RPS20 (NP_001014, 20 a.a. ~ 119 a.a) partial recombinant protein with GST tag.
<b>Sequence</b>	IRITLTSRNVKSLEKVCADLIRGAKEKNLKVKGPMPTKTLRITTRKTPCGEGSKTWDRFQMRIHK RLIDLHSPSENVKQITSISIEPGVEVEVTIADA
<b>Host</b>	Mouse
<b>Reactivity</b>	Human
<b>Quality Control Testing</b>	Antibody Reactive Against Recombinant Protein. Western Blot detection against Immunogen (37.11 KDa) .
<b>Storage Buffer</b>	50 % glycerol
<b>Storage Instruction</b>	Store at -20°C or lower. Aliquot to avoid repeated freezing and thawing.

## Applications

- Western Blot (Recombinant protein)

[Protocol Download](#)

- ELISA

## Gene Info — RPS20

Entrez GeneID [6224](#)

GeneBank Accession# [NM\\_001023](#)

Protein Accession# [NP\\_001014](#)

Gene Name RPS20

Gene Alias FLJ27451, MGC102930

Gene Description ribosomal protein S20

Omim ID [603682](#)

Gene Ontology [Hyperlink](#)

**Gene Summary** Ribosomes, the organelles that catalyze protein synthesis, consist of a small 40S subunit and a large 60S subunit. Together these subunits are composed of 4 RNA species and approximately 80 structurally distinct proteins. This gene encodes a ribosomal protein that is a component of the 40 S subunit. The protein belongs to the S10P family of ribosomal proteins. It is located in the cytoplasm. This gene is co-transcribed with the small nucleolar RNA gene U54, which is located in its second intron. As is typical for genes encoding ribosomal proteins, there are multiple processed pseudogenes of this gene dispersed through the genome. Two transcript variants encoding different isoforms have been identified for this gene. [provided by RefSeq]

Other Designations 40S ribosomal protein S20

## Pathway

- [Ribosome](#)

## Disease

- [Diabetes Mellitus](#)