

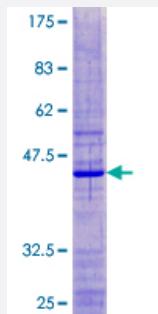
Full-Length

RPS18 (Human) Recombinant Protein (P01)

Catalog # H00006222-P01

Size 25 ug, 10 ug

Applications



Specification

Product Description	Human RPS18 full-length ORF (NP_072045.1, 1 a.a. - 152 a.a.) recombinant protein with GST-tag at N-terminal.
Sequence	MSLVPEKFQHLRVLNTNIDGRRKIAFAITAIKGVGRRYAHVVLRKADIDLTKRAGELTEDEVERVITIMQNPRQYKIPDWFLNRQKDVKDGYKQVLANGLDNKLREDLERLKKIRAHRLRHFHWGLRVRGQHTKTTGRRGRTVGVSKKK
Host	Wheat Germ (in vitro)
Theoretical MW (kDa)	44.1
Preparation Method	in vitro wheat germ expression system
Purification	Glutathione Sepharose 4 Fast Flow
Quality Control Testing	12.5% SDS-PAGE Stained with Coomassie Blue.
Storage Buffer	50 mM Tris-HCl, 10 mM reduced Glutathione, pH=8.0 in the elution buffer.
Storage Instruction	Store at -80°C. Aliquot to avoid repeated freezing and thawing.
Note	Best use within three months from the date of receipt of this protein.

Applications

- Enzyme-linked Immunoabsorbent Assay
- Western Blot (Recombinant protein)
- Antibody Production
- Protein Array

Gene Info — RPS18

Entrez GeneID [6222](#)

GeneBank Accession# [NM_022551.2](#)

Protein Accession# [NP_072045.1](#)

Gene Name RPS18

Gene Alias D6S218E, HKE3, KE-3, KE3, MGC117351, MGC126835, MGC126837

Gene Description ribosomal protein S18

Omim ID [180473](#)

Gene Ontology [Hyperlink](#)

Gene Summary Ribosomes, the organelles that catalyze protein synthesis, consist of a small 40S subunit and a large 60S subunit. Together these subunits are composed of 4 RNA species and approximately 80 structurally distinct proteins. This gene encodes a ribosomal protein that is a component of the 40 S subunit. The protein belongs to the S13P family of ribosomal proteins. It is located in the cytoplasm. The gene product of the E. coli ortholog (ribosomal protein S13) is involved in the binding of Met-tRNA, and thus, in the initiation of translation. This gene is an ortholog of mouse Ke3. As is typical for genes encoding ribosomal proteins, there are multiple processed pseudogenes of this gene dispersed through the genome. [provided by RefSeq]

Other Designations 40S ribosomal protein S18|OTTHUMP00000029059|rhabdomyosarcoma antigen MU-RMS-40.21

Pathway

- [Ribosome](#)

Disease

- [Genetic Predisposition to Disease](#)
- [Lupus Erythematosus](#)