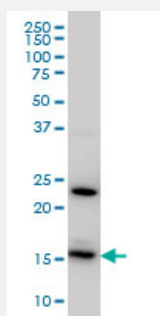


RPS17 monoclonal antibody (M01), clone 2C7

Catalog # H00006218-M01

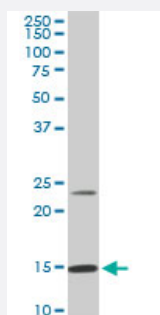
Size 50 ug

Applications



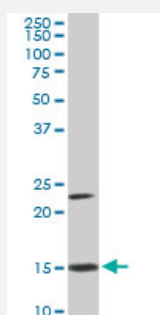
Western Blot (Cell lysate)

RPS17 monoclonal antibody (M01), clone 2C7 Western Blot analysis of RPS17 expression in HeLa (Cat # L013V1).



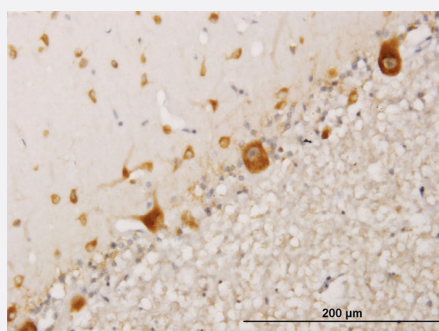
Western Blot (Cell lysate)

RPS17 monoclonal antibody (M01), clone 2C7. Western Blot analysis of RPS17 expression in PC-12(Cat # L012V1).



Western Blot (Cell lysate)

RPS17 monoclonal antibody (M01), clone 2C7. Western Blot analysis of RPS17 expression in NIH/3T3(Cat # L018V1).

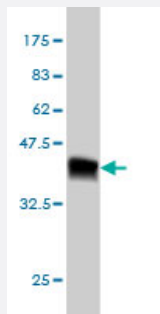
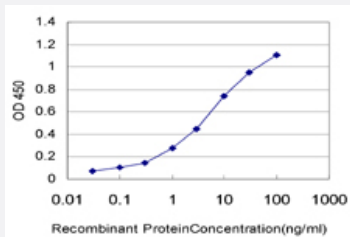


Immunohistochemistry (Formalin/PFA-fixed paraffin-embedded sections)

Immunoperoxidase of monoclonal antibody to RPS17 on formalin-fixed paraffin-embedded human cerebellum. [antibody concentration 1.2 ug/ml]

Sandwich ELISA (Recombinant protein)

Detection limit for recombinant GST tagged RPS17 is approximately 0.1ng/ml as a capture antibody.



Western Blot detection against Immunogen (36.74 KDa) .

Specification

Product Description	Mouse monoclonal antibody raised against a partial recombinant RPS17.
Immunogen	RPS17 (NP_001012, 36 a.a. ~ 135 a.a) partial recombinant protein with GST tag. MW of the GST tag alone is 26 KDa.
Sequence	EEIAIIPSKLRNKIAGYVTHLMKRIQRGPVRGISIKLQEEERERRDNYVPEVSALDQEIIIEVDPDTKE MLKLLDFGSLSNLQVTQPTVGMNFKTPRGPV
Host	Mouse
Reactivity	Human, Mouse, Rat
Isotype	IgG1 Kappa
Quality Control Testing	Antibody Reactive Against Recombinant Protein. Western Blot detection against Immunogen (36.74 KDa) .
Storage Buffer	In 1x PBS, pH 7.4
Storage Instruction	Store at -20°C or lower. Aliquot to avoid repeated freezing and thawing.

Applications

- Western Blot (Cell lysate)

RPS17 monoclonal antibody (M01), clone 2C7 Western Blot analysis of RPS17 expression in HeLa (Cat # L013V1).

[Protocol Download](#)

- Western Blot (Cell lysate)

RPS17 monoclonal antibody (M01), clone 2C7. Western Blot analysis of RPS17 expression in PC-12(Cat # L012V1).

[Protocol Download](#)

- Western Blot (Cell lysate)

RPS17 monoclonal antibody (M01), clone 2C7. Western Blot analysis of RPS17 expression in NIH/3T3(Cat # L018V1).

[Protocol Download](#)

- Western Blot (Recombinant protein)

[Protocol Download](#)

- Immunohistochemistry (Formalin/PFA-fixed paraffin-embedded sections)

Immunoperoxidase of monoclonal antibody to RPS17 on formalin-fixed paraffin-embedded human cerebellum. [antibody concentration 1.2 ug/ml]

[Protocol Download](#)

- Sandwich ELISA (Recombinant protein)

Detection limit for recombinant GST tagged RPS17 is approximately 0.1ng/ml as a capture antibody.

[Protocol Download](#)

- ELISA

Gene Info — RPS17

Entrez GeneID	6218
---------------	----------------------

GeneBank Accession#	NM_001021
---------------------	---------------------------

Protein Accession#	NP_001012
--------------------	---------------------------

Gene Name	RPS17
-----------	-------

Gene Alias	DBA4, MGC72007, RPS17L1, RPS17L2
------------	----------------------------------

Gene Description	ribosomal protein S17
Omim ID	180472
Gene Ontology	Hyperlink
Gene Summary	<p>Ribosomes, the organelles that catalyze protein synthesis, consist of a small 40S subunit and a large 60S subunit. Together these subunits are composed of 4 RNA species and approximately 80 structurally distinct proteins. This gene encodes a ribosomal protein that is a component of the 40S subunit. The protein belongs to the S17E family of ribosomal proteins. It is located in the cytoplasm. As is typical for genes encoding ribosomal proteins, there are multiple processed pseudogenes of this gene dispersed through the genome. [provided by RefSeq]</p>
Other Designations	40S ribosomal protein S17

Pathway

- [Ribosome](#)