

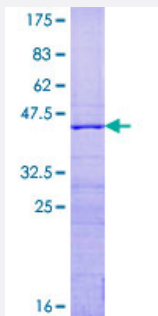
Full-Length

## RPS15 (Human) Recombinant Protein (P02)

Catalog # H00006209-P02

Size 25 ug, 10 ug

### Applications



### Specification

<b>Product Description</b>	Human RPS15 full-length ORF ( NP_001009.1, 1 a.a. - 145 a.a.) recombinant protein with GST-tag at N-terminal.
<b>Sequence</b>	MAVEQKKKRTFRKFTYRGVDLDQLLDMSYEQMLQLYSARQRRRLNRGLRRKQHSLLKRLRKAK KEAPPMEKPEVVKTHLRDMILPEMVGSMVGVYNGKTFNQVEIKPEMIGHYLGEFSITYKPVKHGR PGIGATHSSRFIPLK
<b>Host</b>	Wheat Germ (in vitro)
<b>Theoretical MW (kDa)</b>	43.4
<b>Preparation Method</b>	<a href="#">in vitro wheat germ expression system</a>
<b>Purification</b>	Glutathione Sepharose 4 Fast Flow
<b>Quality Control Testing</b>	12.5% SDS-PAGE Stained with Coomassie Blue.
<b>Storage Buffer</b>	50 mM Tris-HCl, 10 mM reduced Glutathione, pH=8.0 in the elution buffer.
<b>Storage Instruction</b>	Store at -80°C. Aliquot to avoid repeated freezing and thawing.
<b>Note</b>	Best use within three months from the date of receipt of this protein.

## Applications

- Enzyme-linked Immunoabsorbent Assay
- Western Blot (Recombinant protein)
- Antibody Production
- Protein Array

## Gene Info — RPS15

Entrez GeneID [6209](#)

GeneBank Accession# [NM\\_001018.3](#)

Protein Accession# [NP\\_001009.1](#)

Gene Name RPS15

Gene Alias MGC111130, RIG

Gene Description ribosomal protein S15

Omim ID [180535](#)

Gene Ontology [Hyperlink](#)

**Gene Summary** Ribosomes, the organelles that catalyze protein synthesis, consist of a small 40S subunit and a large 60S subunit. Together these subunits are composed of 4 RNA species and approximately 80 structurally distinct proteins. This gene encodes a ribosomal protein that is a component of the 40 S subunit. The protein belongs to the S19P family of ribosomal proteins. It is located in the cytoplasm. This gene has been found to be activated in various tumors, such as insulinomas, esophageal cancers, and colon cancers. As is typical for genes encoding ribosomal proteins, there are multiple processed pseudogenes of this gene dispersed through the genome. [provided by RefSeq]

**Other Designations** 40S ribosomal protein S15|homolog of rat insulinoma|insulinoma protein

## Pathway

- [Ribosome](#)