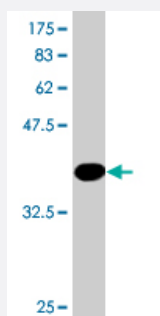


RPS14 monoclonal antibody (M03), clone 2B1

Catalog # H00006208-M03

Size 100 ug

Applications



Western Blot detection against Immunogen (42.35 KDa) .

Specification

Product Description	Mouse monoclonal antibody raised against a full-length recombinant RPS14.
Immunogen	RPS14 (AAH03401, 1 a.a. ~ 151 a.a) full-length recombinant protein with GST tag. MW of the GST tag alone is 26 KDa.
Sequence	MAPRKGKEKKEEQVISLGPQVAEGENVFGVCHIFASFNDTFVHVTDLSGKETICRVTGGMKVKA DRDESSPYAAMLAAQDVAQRCKELGITALHIKLRATGGNRTKTPGPGAQSALRALARSGMKIGRIE DVTPIPSDSTRKGGRRGRRL
Host	Mouse
Reactivity	Human
Isotype	IgM Kappa
Quality Control Testing	Antibody Reactive Against Recombinant Protein. Western Blot detection against Immunogen (42.35 KDa) .
Storage Buffer	In 1x PBS, pH 7.4
Storage Instruction	Store at -20°C or lower. Aliquot to avoid repeated freezing and thawing.

Applications

- Western Blot (Recombinant protein)

[Protocol Download](#)

- ELISA

Gene Info — RPS14

Entrez GeneID [6208](#)

GeneBank Accession# [BC003401](#)

Protein Accession# [AAH03401](#)

Gene Name RPS14

Gene Alias EMTB

Gene Description ribosomal protein S14

Omim ID [130620](#)

Gene Ontology [Hyperlink](#)

Gene Summary

Ribosomes, the organelles that catalyze protein synthesis, consist of a small 40S subunit and a large 60S subunit. Together these subunits are composed of 4 RNA species and approximately 80 structurally distinct proteins. This gene encodes a ribosomal protein that is a component of the 40 S subunit. The protein belongs to the S11P family of ribosomal proteins. It is located in the cytoplasm. Transcript variants utilizing alternative transcription initiation sites have been described in the literature. As is typical for genes encoding ribosomal proteins, there are multiple processed pseudogenes of this gene dispersed through the genome. In Chinese hamster ovary cells, mutations in this gene can lead to resistance to emetine, a protein synthesis inhibitor. Multiple alternatively spliced transcript variants encoding the same protein have been found for this gene. [provided by RefSeq]

Other Designations 40S ribosomal protein S14|emetine resistance

Disease

- [Anemia](#)