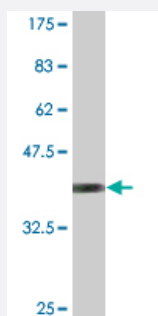


# RPS14 monoclonal antibody (M01), clone 1B3

Catalog # H00006208-M01

Size 100 ug

## Applications



Western Blot detection against Immunogen (42.35 KDa) .

## Specification

|                                |   |
|--------------------------------|---|
| <b>Product Description</b>     | Mouse monoclonal antibody raised against a full-length recombinant RPS14.   |
| <b>Immunogen</b>               | RPS14 (AAH03401, 1 a.a. ~ 151 a.a) full-length recombinant protein with GST tag. MW of the GST tag alone is 26 KDa.   |
| <b>Sequence</b>                | MAPRKGKEKKEEQVISLGPQVAEGENVFGVCHIFASFNDTFVHVTDLSGKETICRVTTGGMKVKA<br>DRDESSPYAAMLAAQDVAQRCKELGITALHIKLRATGGNRTKTPGPGAQSALRALARSGMKIGRIE<br>DVTPIPSDSTRKGGRRGRRL |
| <b>Host</b>                    | Mouse   |
| <b>Reactivity</b>              | Human   |
| <b>Isotype</b>                 | IgG2a Kappa   |
| <b>Quality Control Testing</b> | Antibody Reactive Against Recombinant Protein.<br>Western Blot detection against Immunogen (42.35 KDa) .  |
| <b>Storage Buffer</b>          | In 1x PBS, pH 7.4   |
| <b>Storage Instruction</b>     | Store at -20°C or lower. Aliquot to avoid repeated freezing and thawing.  |

## Applications

- Western Blot (Recombinant protein)

[Protocol Download](#)

- ELISA

## Gene Info — RPS14

Entrez GeneID [6208](#)

GeneBank Accession# [BC003401](#)

Protein Accession# [AAH03401](#)

Gene Name RPS14

Gene Alias EMTB

Gene Description ribosomal protein S14

Omim ID [130620](#)

Gene Ontology [Hyperlink](#)

**Gene Summary**

Ribosomes, the organelles that catalyze protein synthesis, consist of a small 40S subunit and a large 60S subunit. Together these subunits are composed of 4 RNA species and approximately 80 structurally distinct proteins. This gene encodes a ribosomal protein that is a component of the 40S subunit. The protein belongs to the S11P family of ribosomal proteins. It is located in the cytoplasm. Transcript variants utilizing alternative transcription initiation sites have been described in the literature. As is typical for genes encoding ribosomal proteins, there are multiple processed pseudogenes of this gene dispersed through the genome. In Chinese hamster ovary cells, mutations in this gene can lead to resistance to emetine, a protein synthesis inhibitor. Multiple alternatively spliced transcript variants encoding the same protein have been found for this gene. [provided by RefSeq]

**Other Designations** 40S ribosomal protein S14|emetine resistance

## Disease

- [Anemia](#)