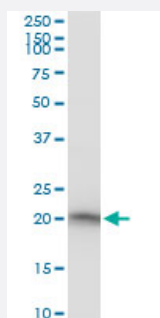


# RPS7 polyclonal antibody (A01)

Catalog # H00006201-A01

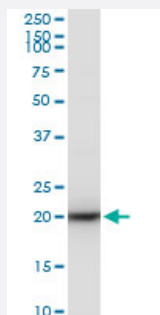
Size 50 uL

## Applications



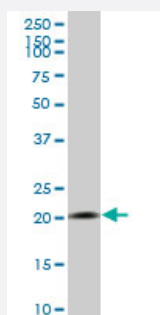
### Western Blot (Cell lysate)

RPS7 polyclonal antibody (A01). Western Blot analysis of RPS7 expression in Raw 264.7.



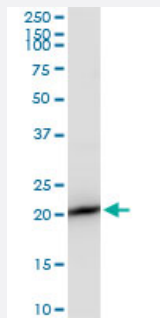
### Western Blot (Cell lysate)

RPS7 polyclonal antibody (A01). Western Blot analysis of RPS7 expression in PC-12.



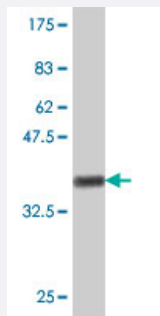
### Western Blot (Cell lysate)

RPS7 polyclonal antibody (A01), Lot # 051213JC01 Western Blot analysis of RPS7 expression in MCF-7 ( Cat # L046V1 ).



## Western Blot (Cell lysate)

RPS7 polyclonal antibody (A01). Western Blot analysis of RPS7 expression in NIH/3T3.



Western Blot detection against Immunogen (37.11 kDa) .

## Specification

<b>Product Description</b>	Mouse polyclonal antibody raised against a partial recombinant RPS7.
<b>Immunogen</b>	RPS7 (NP_001002, 95 a.a. ~ 194 a.a) partial recombinant protein with GST tag.
<b>Sequence</b>	IAQRRILPKPTRKSRTKNKQKRPRSRTLAVHDAILEDLVFPSEVKGKRIRVKLDGSRLIKVHLDKAQ QNNVEHKVETFSGVYKKLTGKDVNFEPFQQL
<b>Host</b>	Mouse
<b>Reactivity</b>	Human, Mouse, Rat
<b>Quality Control Testing</b>	Antibody Reactive Against Recombinant Protein. Western Blot detection against Immunogen (37.11 kDa) .
<b>Storage Buffer</b>	50 % glycerol
<b>Storage Instruction</b>	Store at -20°C or lower. Aliquot to avoid repeated freezing and thawing.

## Applications

- Western Blot (Cell lysate)

RPS7 polyclonal antibody (A01). Western Blot analysis of RPS7 expression in Raw 264.7.

[Protocol Download](#)

- Western Blot (Cell lysate)

RPS7 polyclonal antibody (A01). Western Blot analysis of RPS7 expression in PC-12.

[Protocol Download](#)

- Western Blot (Cell lysate)

RPS7 polyclonal antibody (A01), Lot # 051213JC01 Western Blot analysis of RPS7 expression in MCF-7 ( Cat # L046V1 ).

[Protocol Download](#)

- Western Blot (Cell lysate)

RPS7 polyclonal antibody (A01). Western Blot analysis of RPS7 expression in NIH/3T3.

[Protocol Download](#)

- Western Blot (Recombinant protein)

[Protocol Download](#)

- ELISA

## Gene Info — RPS7

Entrez GeneID	<a href="#">6201</a>
---------------	----------------------

GeneBank Accession#	<a href="#">NM_001011</a>
---------------------	---------------------------

Protein Accession#	<a href="#">NP_001002</a>
--------------------	---------------------------

Gene Name	RPS7
-----------	------

Gene Alias	-
------------	---

Gene Description	ribosomal protein S7
------------------	----------------------

Omim ID	<a href="#">603658</a>
---------	------------------------

Gene Ontology	<a href="#">Hyperlink</a>
---------------	---------------------------

**Gene Summary**

Ribosomes, the organelles that catalyze protein synthesis, consist of a small 40S subunit and a large 60S subunit. Together these subunits are composed of 4 RNA species and approximately 80 structurally distinct proteins. This gene encodes a ribosomal protein that is a component of the 40S subunit. The protein belongs to the S7E family of ribosomal proteins. It is located in the cytoplasm. As is typical for genes encoding ribosomal proteins, there are multiple processed pseudogenes of this gene dispersed through the genome. [provided by RefSeq]

**Other Designations**

40S ribosomal protein S7

**Pathway**

- [Ribosome](#)