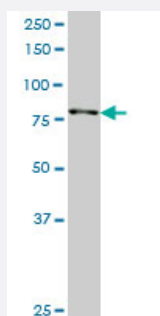


RPS6KA3 monoclonal antibody (M01), clone 2G10

Catalog # H00006197-M01

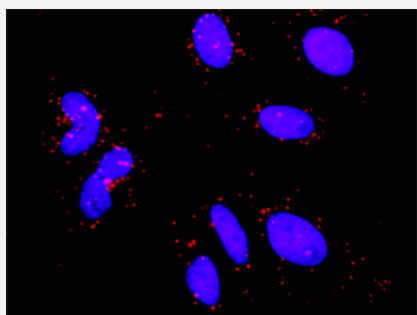
Size 100 ug

Applications



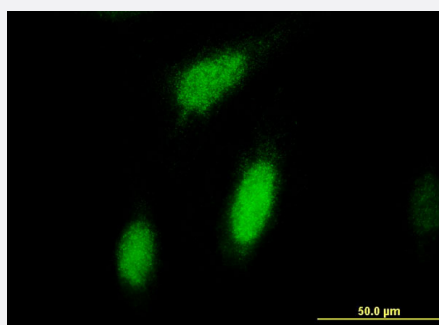
Western Blot (Cell lysate)

RPS6KA3 monoclonal antibody (M01), clone 2G10. Western Blot analysis of RPS6KA3 expression in HepG2 (Cat # L019V1).



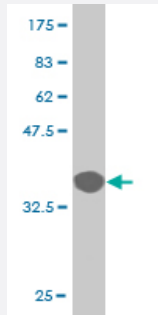
In situ Proximity Ligation Assay (Cell)

Proximity Ligation Analysis of protein-protein interactions between MAPK3 and RPS6KA3. HeLa cells were stained with anti-MAPK3 rabbit purified polyclonal 1:1200 and anti-RPS6KA3 mouse monoclonal antibody 1:50. Each red dot represents the detection of protein-protein interaction complex, and nuclei were counterstained with DAPI (blue).



Immunofluorescence

Immunofluorescence of monoclonal antibody to RPS6KA3 on HeLa cell .
[antibody concentration 10 ug/ml]



Western Blot detection against Immunogen (36.08 KDa) .

Specification

Product Description	Mouse monoclonal antibody raised against a partial recombinant RPS6KA3.
Immunogen	RPS6KA3 (NP_004577, 2 a.a. ~ 95 a.a) partial recombinant protein with GST tag. MW of the GST tag alone is 26 KDa.
Sequence	PLAQLADPWQKMAVESPSDSAENGQQIMDEPMGEEEEINPQTEEVSIKEIAITHHVKEGHEKADPSQFELLKVLGQGSFGKVFLVKKISGSDARQ
Host	Mouse
Reactivity	Human
Isotype	IgG2b Kappa
Quality Control Testing	Antibody Reactive Against Recombinant Protein. Western Blot detection against Immunogen (36.08 KDa) .
Storage Buffer	In 1x PBS, pH 7.4
Storage Instruction	Store at -20°C or lower. Aliquot to avoid repeated freezing and thawing.

Applications

- Western Blot (Cell lysate)
 RPS6KA3 monoclonal antibody (M01), clone 2G10. Western Blot analysis of RPS6KA3 expression in HepG2 (Cat # L019V1).
[Protocol Download](#)
- Western Blot (Recombinant protein)
[Protocol Download](#)
- ELISA

- *In situ* Proximity Ligation Assay (Cell)

Proximity Ligation Analysis of protein-protein interactions between MAPK3 and RPS6KA3. HeLa cells were stained with anti-MAPK3 rabbit purified polyclonal 1:1200 and anti-RPS6KA3 mouse monoclonal antibody 1:50. Each red dot represents the detection of protein-protein interaction complex, and nuclei were counterstained with DAPI (blue).

- Immunofluorescence

Immunofluorescence of monoclonal antibody to RPS6KA3 on HeLa cell . [antibody concentration 10 ug/ml]

Gene Info — RPS6KA3

Entrez GeneID	6197
GeneBank Accession#	NM_004586
Protein Accession#	NP_004577
Gene Name	RPS6KA3
Gene Alias	CLS, HU-3, ISPK-1, MAPKAPK1B, MRX19, RSK, RSK2, S6K-alpha3, p90-RSK2, pp90RSK2
Gene Description	ribosomal protein S6 kinase, 90kDa, polypeptide 3
Omim ID	300075 303600
Gene Ontology	Hyperlink
Gene Summary	This gene encodes a member of the RSK (ribosomal S6 kinase) family of serine/threonine kinase s. This kinase contains 2 non-identical kinase catalytic domains and phosphorylates various subst rates, including members of the mitogen-activated kinase (MAPK) signalling pathway. The activity of this protein has been implicated in controlling cell growth and differentiation. Mutations in this g ene have been associated with Coffin-Lowry syndrome (CLS). [provided by RefSeq
Other Designations	OTTHUMP00000023036 insulin-stimulated protein kinase 1 mental retardation, X-linked 19 ribos omal protein S6 kinase, 90kD, polypeptide 3

Pathway

- [Long-term potentiation](#)
- [MAPK signaling pathway](#)
- [mTOR signaling pathway](#)
- [Neurotrophin signaling pathway](#)

Disease

- [Head and Neck Neoplasms](#)
- [Neoplasm Recurrence](#)
- [Neoplasms](#)