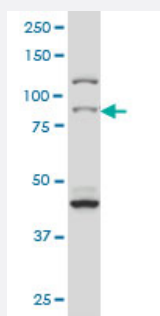


RPS6KA2 monoclonal antibody (M01), clone 1F6

Catalog # H00006196-M01

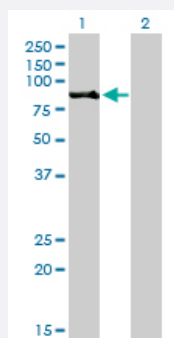
Size 100 ug

Applications



Western Blot (Cell lysate)

RPS6KA2 monoclonal antibody (M01), clone 1F6 Western Blot analysis of RPS6KA2 expression in HeLa S3 NE (Cat # L013V3).

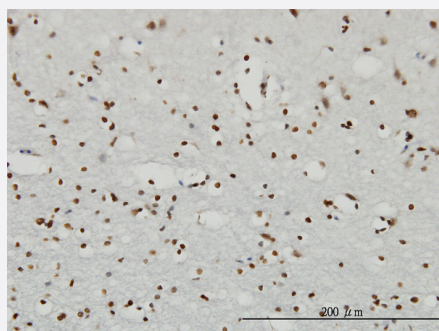


Western Blot (Transfected lysate)

Western Blot analysis of RPS6KA2 expression in transfected 293T cell line by RPS6KA2 monoclonal antibody (M01), clone 1F6.

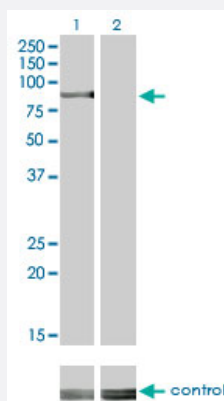
Lane 1: RPS6KA2 transfected lysate(83.2 KDa).

Lane 2: Non-transfected lysate.



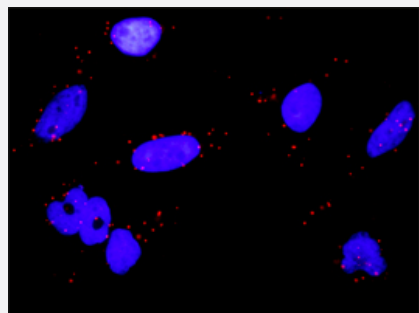
Immunohistochemistry (Formalin/PFA-fixed paraffin-embedded sections)

Immunoperoxidase of monoclonal antibody to RPS6KA2 on formalin-fixed paraffin-embedded human cerebral cortex. [antibody concentration 3 ug/ml]



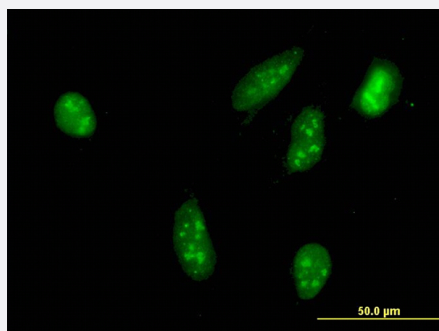
RNAi Knockdown (Antibody validated)

Western blot analysis of RPS6KA2 over-expressed 293 cell line, cotransfected with RPS6KA2 Validated Chimera RNAi (Cat # H00006196-R01V) (Lane 2) or non-transfected control (Lane 1). Blot probed with RPS6KA2 monoclonal antibody (M01) clone 1F6 (Cat # H00006196-M01). GAPDH (36.1 kDa) used as specificity and loading control.



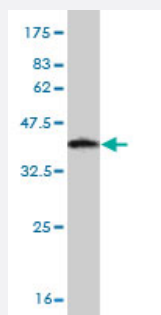
In situ Proximity Ligation Assay (Cell)

Proximity Ligation Analysis of protein-protein interactions between MAPK3 and RPS6KA2. HeLa cells were stained with anti-MAPK3 rabbit purified polyclonal 1:1200 and anti-RPS6KA2 mouse monoclonal antibody 1:50. Each red dot represents the detection of protein-protein interaction complex, and nuclei were counterstained with DAPI (blue).



Immunofluorescence

Immunofluorescence of monoclonal antibody to RPS6KA2 on HeLa cell.
[antibody concentration 10 ug/ml]



Western Blot detection against Immunogen (37.07 KDa) .

Specification

Product Description

Mouse monoclonal antibody raised against a partial recombinant RPS6KA2.

Immunogen

RPS6KA2 (AAH02363, 631 a.a. ~ 733 a.a) partial recombinant protein with GST tag. MW of the GS T tag alone is 26 KDa.

Sequence	YALSGGNWDSISDAAKDVVSKMLHVDPHQRLTAMQVLKHPWVWNREYLSPNQLSRQDVHLVKG AMAATYFALNRTTPQAPRLEPVLSSNLAQRRGMKRLTSTRL
Host	Mouse
Reactivity	Human
Isotype	IgG2a Kappa
Quality Control Testing	Antibody Reactive Against Recombinant Protein. Western Blot detection against Immunogen (37.07 KDa) .
Storage Buffer	In 1x PBS, pH 7.4
Storage Instruction	Store at -20°C or lower. Aliquot to avoid repeated freezing and thawing.

Applications

- Western Blot (Cell lysate)

RPS6KA2 monoclonal antibody (M01), clone 1F6 Western Blot analysis of RPS6KA2 expression in Hela S3 NE (Cat # L013V3).

[Protocol Download](#)

- Western Blot (Transfected lysate)

Western Blot analysis of RPS6KA2 expression in transfected 293T cell line by RPS6KA2 monoclonal antibody (M01), clone 1F6.

Lane 1: RPS6KA2 transfected lysate(83.2 KDa).

Lane 2: Non-transfected lysate.

[Protocol Download](#)

- Western Blot (Recombinant protein)

[Protocol Download](#)

- Immunohistochemistry (Formalin/PFA-fixed paraffin-embedded sections)

Immunoperoxidase of monoclonal antibody to RPS6KA2 on formalin-fixed paraffin-embedded human cerebral cortex. [antibody concentration 3 ug/ml]

[Protocol Download](#)

- ELISA

- RNAi Knockdown (Antibody validated)

Western blot analysis of RPS6KA2 over-expressed 293 cell line, cotransfected with RPS6KA2 Validated Chimera RNAi (Cat # H00006196-R01V) (Lane 2) or non-transfected control (Lane 1). Blot probed with RPS6KA2 monoclonal antibody (M01) clone 1F6 (Cat # H00006196-M01). GAPDH (36.1 kDa) used as specificity and loading control.

[Protocol Download](#)

- *In situ* Proximity Ligation Assay (Cell)

Proximity Ligation Analysis of protein-protein interactions between MAPK3 and RPS6KA2. HeLa cells were stained with anti-MAPK3 rabbit purified polyclonal 1:1200 and anti-RPS6KA2 mouse monoclonal antibody 1:50. Each red dot represents the detection of protein-protein interaction complex, and nuclei were counterstained with DAPI (blue).

- Immunofluorescence

Immunofluorescence of monoclonal antibody to RPS6KA2 on HeLa cell. [antibody concentration 10 ug/ml]

Gene Info — RPS6KA2

Entrez GeneID [6196](#)

GeneBank Accession# [BC002363](#)

Protein Accession# [AAH02363](#)

Gene Name RPS6KA2

Gene Alias HU-2, MAPKAPK1C, RSK, RSK3, S6K-alpha, S6K-alpha2, p90-RSK3, pp90RSK3

Gene Description ribosomal protein S6 kinase, 90kDa, polypeptide 2

Omim ID [601685](#)

Gene Ontology [Hyperlink](#)

Gene Summary This gene encodes a member of the RSK (ribosomal S6 kinase) family of serine/threonine kinase s. This kinase contains 2 non-identical kinase catalytic domains and phosphorylates various subst rates, including members of the mitogen-activated kinase (MAPK) signalling pathway. The activity of this protein has been implicated in controlling cell growth and differentiation. Alternate transcript ional splice variants, encoding different isoforms, have been characterized. [provided by RefSeq

Other Designations ribosomal S6 kinase 3|ribosomal protein S6 kinase alpha 2|ribosomal protein S6 kinase, 90kD, p olypeptide 2

Publication Reference

- [p90 ribosomal S6 kinase 3 contributes to cardiac insufficiency in \$\alpha\$ -tropomyosin Glu180Gly transgenic mice.](#)

Passariello CL, Gayanilo M, Kritzer MD, Thakur H, Cozacov Z, Rusconi F, Wiczorek D, Sanders M, Li J, Kapiloff MS.

American Journal of Physiology. Heart and Circulatory Physiology 2013 Oct; 305(7):H1010.

Application: WB-Ti, Mouse, Heart

Pathway

- [Long-term potentiation](#)
- [MAPK signaling pathway](#)
- [mTOR signaling pathway](#)
- [Neurotrophin signaling pathway](#)

Disease

- [Tobacco Use Disorder](#)