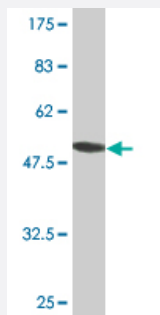


RPS5 monoclonal antibody (M10), clone 3A5

Catalog # H00006193-M10

Size 100 ug

Applications



Western Blot detection against Immunogen (48.18 KDa) .

Specification

Product Description	Mouse monoclonal antibody raised against a full-length recombinant RPS5.
Immunogen	RPS5 (AAH18151, 1 a.a. ~ 204 a.a) full-length recombinant protein with GST tag. MW of the GST tag alone is 26 KDa.
Sequence	MTEWETAAPAVAETPDIKLFGKWSTDDVQINDISLQDYIAVKEKYAKYLPHSAGRYAAKRFRKAQC PIVERLTNSMMMHGRNNGKKLMTVRIVKHAFEIIHLLTGENPLQVLVNAIINSGPREDSTRIGRAGTV RRQAVDVSPLRRVNQAIWLLCTGAREAAFRNIKTIAECLADELINAAKGSSNSYAIKKKDELERVAK SNR
Host	Mouse
Reactivity	Human
Interspecies Antigen Sequence	Mouse (99); Rat (99)
Isotype	IgG2a Kappa
Quality Control Testing	Antibody Reactive Against Recombinant Protein. Western Blot detection against Immunogen (48.18 KDa) .
Storage Buffer	In 1x PBS, pH 7.4
Storage Instruction	Store at -20°C or lower. Aliquot to avoid repeated freezing and thawing.

Applications

- Western Blot (Recombinant protein)

[Protocol Download](#)

- ELISA

Gene Info — RPS5

Entrez GeneID [6193](#)

GeneBank Accession# [BC018151](#)

Protein Accession# [AAH18151](#)

Gene Name RPS5

Gene Alias -

Gene Description ribosomal protein S5

Omim ID [603630](#)

Gene Ontology [Hyperlink](#)

Gene Summary Ribosomes, the organelles that catalyze protein synthesis, consist of a small 40S subunit and a large 60S subunit. Together these subunits are composed of 4 RNA species and approximately 80 structurally distinct proteins. This gene encodes a ribosomal protein that is a component of the 40 S subunit. The protein belongs to the S7P family of ribosomal proteins. It is located in the cytoplasm. Variable expression of this gene in colorectal cancers compared to adjacent normal tissues has been observed, although no correlation between the level of expression and the severity of the disease has been found. As is typical for genes encoding ribosomal proteins, there are multiple processed pseudogenes of this gene dispersed through the genome. [provided by RefSeq]

Other Designations 40S ribosomal protein S5

Pathway

- [Ribosome](#)