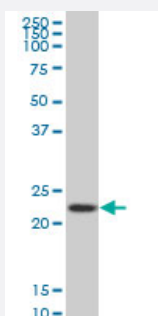


RPS5 monoclonal antibody (M02), clone 4H3

Catalog # H00006193-M02

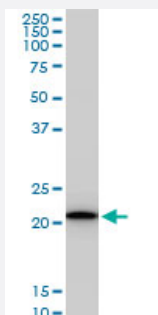
Size 100 ug

Applications



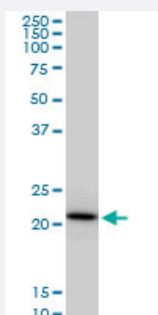
Western Blot (Cell lysate)

RPS5 monoclonal antibody (M02), clone 4H3 Western Blot analysis of RPS5 expression in HeLa (Cat # L013V1).



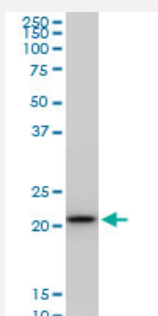
Western Blot (Cell lysate)

RPS5 monoclonal antibody (M02), clone 4H3. Western Blot analysis of RPS5 expression in PC-12(Cat # L012V1).



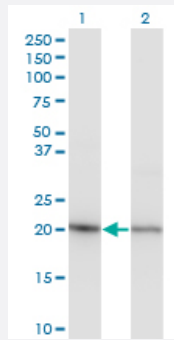
Western Blot (Cell lysate)

RPS5 monoclonal antibody (M02), clone 4H3. Western Blot analysis of RPS5 expression in Raw 264.7(Cat # L024V1).



Western Blot (Cell lysate)

RPS5 monoclonal antibody (M02), clone 4H3. Western Blot analysis of RPS5 expression in NIH/3T3(Cat # L018V1).

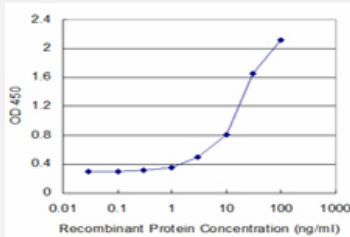


Western Blot (Transfected lysate)

Western Blot analysis of RPS5 expression in transfected 293T cell line by RPS5 monoclonal antibody (M02), clone 4H3.

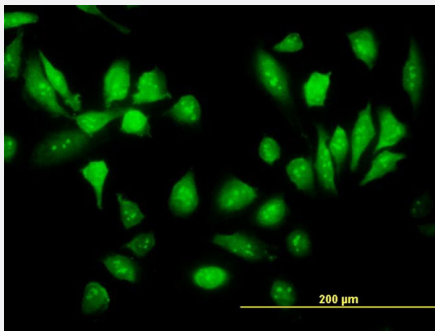
Lane 1: RPS5 transfected lysate (22.9 KDa).

Lane 2: Non-transfected lysate.



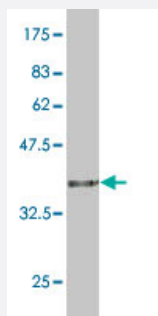
Sandwich ELISA (Recombinant protein)

Detection limit for recombinant GST tagged RPS5 is approximately 3ng/ml as a capture antibody.



Immunofluorescence

Immunofluorescence of monoclonal antibody to RPS5 on HeLa cell. [antibody concentration 10 ug/ml]



Western Blot detection against Immunogen (36.63 KDa).

Specification

Product Description

Mouse monoclonal antibody raised against a partial recombinant RPS5.

Immunogen

RPS5 (NP_001000, 106 a.a. ~ 204 a.a) partial recombinant protein with GST tag. MW of the GST tag alone is 26 KDa.

Sequence	ENPLQVLVNAIINSGPREDSTRIGRAGTVRRQAVDVSPLRNVNQAWLLCTGAREAAFRNIKTIAEC LADELINAAKGSSNSYAIKKKDELERVAKSNR
Host	Mouse
Reactivity	Human, Mouse, Rat
Interspecies Antigen Sequence	Mouse (100); Rat (100)
Isotype	IgG2b Kappa
Quality Control Testing	Antibody Reactive Against Recombinant Protein. Western Blot detection against Immunogen (36.63 KDa) .
Storage Buffer	In 1x PBS, pH 7.4
Storage Instruction	Store at -20°C or lower. Aliquot to avoid repeated freezing and thawing.

Applications

- Western Blot (Cell lysate)

RPS5 monoclonal antibody (M02), clone 4H3 Western Blot analysis of RPS5 expression in HeLa (Cat # L013V1).

[Protocol Download](#)

- Western Blot (Cell lysate)

RPS5 monoclonal antibody (M02), clone 4H3. Western Blot analysis of RPS5 expression in PC-12(Cat # L012V1).

[Protocol Download](#)

- Western Blot (Cell lysate)

RPS5 monoclonal antibody (M02), clone 4H3. Western Blot analysis of RPS5 expression in Raw 264.7(Cat # L024V1).

[Protocol Download](#)

- Western Blot (Cell lysate)

RPS5 monoclonal antibody (M02), clone 4H3. Western Blot analysis of RPS5 expression in NIH/3T3(Cat # L018V1).

[Protocol Download](#)

- Western Blot (Transfected lysate)

Western Blot analysis of RPS5 expression in transfected 293T cell line by RPS5 monoclonal antibody (M02), clone 4H3.

Lane 1: RPS5 transfected lysate(22.9 KDa).

Lane 2: Non-transfected lysate.

[Protocol Download](#)

- Western Blot (Recombinant protein)

[Protocol Download](#)

- Sandwich ELISA (Recombinant protein)

Detection limit for recombinant GST tagged RPS5 is approximately 3ng/ml as a capture antibody.

[Protocol Download](#)

- ELISA

- Immunofluorescence

Immunofluorescence of monoclonal antibody to RPS5 on HeLa cell. [antibody concentration 10 ug/ml]

Gene Info — RPS5

Entrez GeneID	6193
---------------	----------------------

GeneBank Accession#	NM_001009
---------------------	---------------------------

Protein Accession#	NP_001000
--------------------	---------------------------

Gene Name	RPS5
-----------	------

Gene Alias	-
------------	---

Gene Description	ribosomal protein S5
------------------	----------------------

Omim ID	603630
---------	------------------------

Gene Ontology	Hyperlink
---------------	---------------------------

Gene Summary

Ribosomes, the organelles that catalyze protein synthesis, consist of a small 40S subunit and a large 60S subunit. Together these subunits are composed of 4 RNA species and approximately 80 structurally distinct proteins. This gene encodes a ribosomal protein that is a component of the 40S subunit. The protein belongs to the S7P family of ribosomal proteins. It is located in the cytoplasm. Variable expression of this gene in colorectal cancers compared to adjacent normal tissues has been observed, although no correlation between the level of expression and the severity of the disease has been found. As is typical for genes encoding ribosomal proteins, there are multiple processed pseudogenes of this gene dispersed through the genome. [provided by RefSeq]

Other Designations

40S ribosomal protein S5

Pathway

- [Ribosome](#)