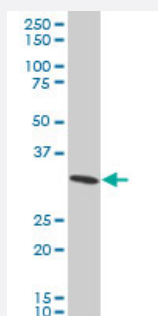


# RPS3A polyclonal antibody (A01)

Catalog # H00006189-A01

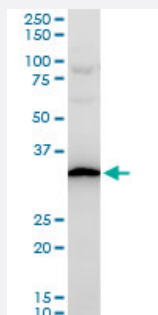
Size 50 uL

## Applications



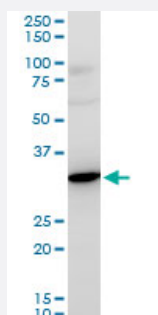
### Western Blot (Cell lysate)

RPS3A polyclonal antibody (A01), Lot # ONW0060316QCS1 Western Blot analysis of RPS3A expression in HeLa ( Cat # L013V1 ).



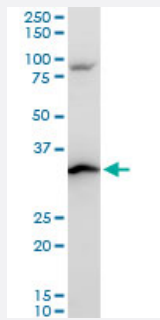
### Western Blot (Cell lysate)

RPS3A polyclonal antibody (A01), Lot # ONW0060316QCS1. Western Blot analysis of RPS3A expression in PC-12.



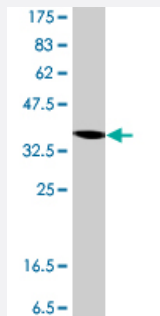
### Western Blot (Cell lysate)

RPS3A polyclonal antibody (A01), Lot # ONW0060316QCS1. Western Blot analysis of RPS3A expression in Raw 264.7.



## Western Blot (Cell lysate)

RPS3A polyclonal antibody (A01), Lot # ONW0060316QCS1. Western Blot analysis of RPS3A expression in NIH/3T3.



Western Blot detection against Immunogen (37.11 kDa) .

## Specification

<b>Product Description</b>	Mouse polyclonal antibody raised against a partial recombinant RPS3A.
<b>Immunogen</b>	RPS3A (NP_000997, 164 a.a. ~ 263 a.a) partial recombinant protein with GST tag.
<b>Sequence</b>	IRKKMMEIMTREVQTNDLKEVVNKLIPDSIGKDIEKACQSIYPLHDVFVRKVKMLKKPKFELGKLME LHGEGSSSGKATGDETGAKVERADGYEPPVQES
<b>Host</b>	Mouse
<b>Reactivity</b>	Human, Mouse, Rat
<b>Quality Control Testing</b>	Antibody Reactive Against Recombinant Protein. Western Blot detection against Immunogen (37.11 kDa) .
<b>Storage Buffer</b>	50 % glycerol
<b>Storage Instruction</b>	Store at -20°C or lower. Aliquot to avoid repeated freezing and thawing.

## Applications

- Western Blot (Cell lysate)

RPS3A polyclonal antibody (A01), Lot # ONW0060316QCS1 Western Blot analysis of RPS3A expression in HeLa ( Cat # L013V1 ).

[Protocol Download](#)

- Western Blot (Cell lysate)

RPS3A polyclonal antibody (A01), Lot # ONW0060316QCS1. Western Blot analysis of RPS3A expression in PC-12.

[Protocol Download](#)

- Western Blot (Cell lysate)

RPS3A polyclonal antibody (A01), Lot # ONW0060316QCS1. Western Blot analysis of RPS3A expression in Raw 264.7.

[Protocol Download](#)

- Western Blot (Cell lysate)

RPS3A polyclonal antibody (A01), Lot # ONW0060316QCS1. Western Blot analysis of RPS3A expression in NIH/3T3.

[Protocol Download](#)

- Western Blot (Recombinant protein)

[Protocol Download](#)

- ELISA

## Gene Info — RPS3A

Entrez GeneID [6189](#)

GeneBank Accession# [NM\\_001006](#)

Protein Accession# [NP\\_000997](#)

Gene Name RPS3A

Gene Alias FTE1, MFTL, MGC23240

Gene Description ribosomal protein S3A

Omim ID [180478](#)

Gene Ontology [Hyperlink](#)

**Gene Summary**

Ribosomes, the organelles that catalyze protein synthesis, consist of a small 40S subunit and a large 60S subunit. Together these subunits are composed of 4 RNA species and approximately 80 structurally distinct proteins. This gene encodes a ribosomal protein that is a component of the 40S subunit. The protein belongs to the S3AE family of ribosomal proteins. It is located in the cytoplasm. Disruption of the gene encoding rat ribosomal protein S3a, also named v-fos transformation effector protein, in v-fos-transformed rat cells results in reversion of the transformed phenotype. Transcript variants utilizing alternative transcription start sites have been described. This gene is co-transcribed with the U73A and U73B small nucleolar RNA genes, which are located in its fourth and third introns, respectively. As is typical for genes encoding ribosomal proteins, there are multiple processed pseudogenes of this gene dispersed through the genome. [provided by RefSeq]

**Other Designations**

40S ribosomal protein S3a|ribosomal protein S3a|v-fos transformation effector protein 1

**Publication Reference**

- [Monoclonal antibodies against human translation termination factor eRF3 and their utilisation for subcellular localisation of eRF3.](#)

Delage M, Dutertre S, Le Guevel R, Frolova L, Berkova N.

Journal of Biochemistry 2011 Jul; 150(1):49.

Application: IF, Human, A549, HeLa cells

**Pathway**

- [Ribosome](#)