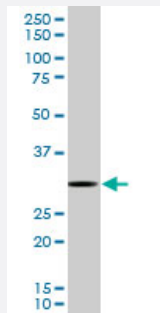


RPS3 monoclonal antibody (M03), clone 2A8

Catalog # H00006188-M03

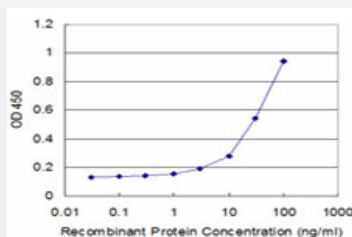
Size 100 ug

Applications



Western Blot (Cell lysate)

RPS3 monoclonal antibody (M03), clone 2A8. Western Blot analysis of RPS3 expression in HeLa S3 NE (Cat # L013V3).



Sandwich ELISA (Recombinant protein)

Detection limit for recombinant GST tagged RPS3 is approximately 3ng/ml as a capture antibody.



Western Blot detection against Immunogen (36.74 kDa).

Specification

Product Description

Mouse monoclonal antibody raised against a partial recombinant RPS3.

Immunogen	RPS3 (NP_000996, 144 a.a. ~ 243 a.a) partial recombinant protein with GST tag. MW of the GST tag alone is 26 KDa.
Sequence	GQRAKSMKFVDGLMIHSGDPVNYVDTAVRHVLLRQGVLGIKVKIMLPWDPTGKIGPKKPLPDHV SVEPKDEILPTTPISEQGGKPEPPAMPQPVPTA
Host	Mouse
Reactivity	Human
Isotype	IgG2a Kappa
Quality Control Testing	Antibody Reactive Against Recombinant Protein. Western Blot detection against Immunogen (36.74 KDa) .
Storage Buffer	In 1x PBS, pH 7.4
Storage Instruction	Store at -20°C or lower. Aliquot to avoid repeated freezing and thawing.

Applications

- Western Blot (Cell lysate)

RPS3 monoclonal antibody (M03), clone 2A8. Western Blot analysis of RPS3 expression in Hela S3 NE (Cat # L013V3).

[Protocol Download](#)

- Western Blot (Recombinant protein)

[Protocol Download](#)

- Sandwich ELISA (Recombinant protein)

Detection limit for recombinant GST tagged RPS3 is approximately 3ng/ml as a capture antibody.

[Protocol Download](#)

- ELISA

Gene Info — RPS3

Entrez GeneID	6188
GeneBank Accession#	NM_001005
Protein Accession#	NP_000996

Gene Name	RPS3
Gene Alias	FLJ26283, FLJ27450, MGC87870
Gene Description	ribosomal protein S3
Omim ID	600454
Gene Ontology	Hyperlink
Gene Summary	<p>Ribosomes, the organelles that catalyze protein synthesis, consist of a small 40S subunit and a large 60S subunit. Together these subunits are composed of 4 RNA species and approximately 80 structurally distinct proteins. This gene encodes a ribosomal protein that is a component of the 40S subunit, where it forms part of the domain where translation is initiated. The protein belongs to the S3P family of ribosomal proteins. Studies of the mouse and rat proteins have demonstrated that the protein has an extraribosomal role as an endonuclease involved in the repair of UV-induced DNA damage. The protein appears to be located in both the cytoplasm and nucleus but not in the nucleolus. Higher levels of expression of this gene in colon adenocarcinomas and adenomatous polyps compared to adjacent normal colonic mucosa have been observed. This gene is co-transcribed with the small nucleolar RNA genes U15A and U15B, which are located in its first and fifth introns, respectively. As is typical for genes encoding ribosomal proteins, there are multiple processed pseudogenes of this gene dispersed through the genome. [provided by RefSeq]</p>
Other Designations	40S ribosomal protein S3 IMR-90 ribosomal protein S3

Pathway

- [Ribosome](#)