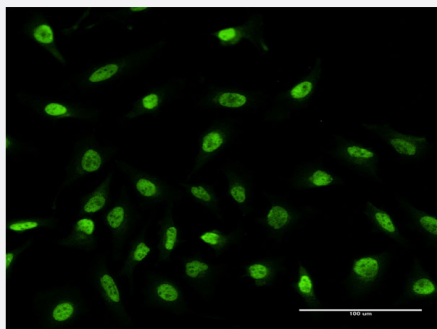


# RPS2 monoclonal antibody (M05), clone 3F5

Catalog # H00006187-M05

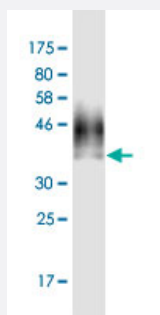
Size 100 ug

## Applications



### Immunofluorescence

Immunofluorescence of monoclonal antibody to RPS2 on HeLa cell . [antibody concentration 10 ug/ml]



Western Blot detection against Immunogen (39.27 KDa) .

## Specification

### Product Description

Mouse monoclonal antibody raised against a partial recombinant RPS2.

### Immunogen

RPS2 (NP\_002943.2, 47 a.a. ~ 170 a.a) partial recombinant protein with GST tag. MW of the GST tag alone is 26 KDa.

### Sequence

GRGARGGKAEDKEWMPVTKLGRLVKDMKIKSLEEMLFSLPIKESEIDFFLGASLKDEV LKIMPVQKQTRAGQRTRFKAFVAIGDYNGHVGLGVKCSKEVATAIRGAILAKLSIPVRRGYW

### Host

Mouse

### Reactivity

Human

Interspecies Antigen Sequence	Mouse (99); Rat (99)
Isotype	IgG2b Kappa
Quality Control Testing	Antibody Reactive Against Recombinant Protein. Western Blot detection against Immunogen (39.27 KDa) .
Storage Buffer	In 1x PBS, pH 7.4
Storage Instruction	Store at -20°C or lower. Aliquot to avoid repeated freezing and thawing.

## Applications

- Western Blot (Recombinant protein)

[Protocol Download](#)

- ELISA

- Immunofluorescence

Immunofluorescence of monoclonal antibody to RPS2 on HeLa cell . [antibody concentration 10 ug/ml]

## Gene Info — RPS2

Entrez GeneID	<a href="#">6187</a>
GeneBank Accession#	<a href="#">NM_002952.3</a>
Protein Accession#	<a href="#">NP_002943.2</a>
Gene Name	RPS2
Gene Alias	LLREP3, MGC102851, MGC117344, MGC117345
Gene Description	ribosomal protein S2
Omim ID	<a href="#">603624</a>
Gene Ontology	<a href="#">Hyperlink</a>

**Gene Summary**

Ribosomes, the organelles that catalyze protein synthesis, consist of a small 40S subunit and a large 60S subunit. Together these subunits are composed of 4 RNA species and approximately 80 structurally distinct proteins. This gene encodes a ribosomal protein that is a component of the 40S subunit. The protein belongs to the S5P family of ribosomal proteins. It is located in the cytoplasm. This gene shares sequence similarity with mouse LLRep3. It is co-transcribed with the small nucleolar RNA gene U64, which is located in its third intron. As is typical for genes encoding ribosomal proteins, there are multiple processed pseudogenes of this gene dispersed through the genome. [provided by RefSeq]

**Other Designations**

40S ribosomal protein S2|OK/KNS-cl.6

## Pathway

- [Ribosome](#)