

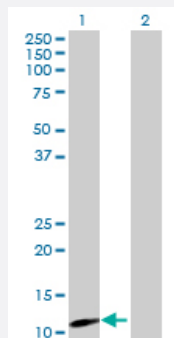
MaxPab®

# MRPS12 MaxPab mouse polyclonal antibody (B01)

Catalog # H00006183-B01

Size 50 uL

## Applications



### Western Blot (Transfected lysate)

Western Blot analysis of MRPS12 expression in transfected 293T cell line ([H00006183-T01](#)) by MRPS12 MaxPab polyclonal antibody.

Lane 1: MRPS12 transfected lysate(15.18 KDa).

Lane 2: Non-transfected lysate.

## Specification

Product Description	Mouse polyclonal antibody raised against a full-length human MRPS12 protein.
Immunogen	MRPS12 (NP_066930, 1 a.a. ~ 138 a.a) full-length human protein.
Sequence	MSWSGLLHGLNTSLTCGPALVPRLWATCSMATLNQMHRLGPPKRPPRKLGPTEGRPQLKGVVLCTFTRKPKKPNSANRKCCRVRLSTGREAVCFIPGEGHTLQEHQMLVEGGRTQDLPGVKLTVVRGKYDCGHVQKK
Host	Mouse
Reactivity	Human
Interspecies Antigen Sequence	Mouse (86); Rat (87)
Quality Control Testing	Antibody reactive against mammalian transfected lysate.
Storage Buffer	No additive
Storage Instruction	Store at -20°C or lower. Aliquot to avoid repeated freezing and thawing.
Note	For IHC and IF applications, antibody purification with Protein A will be needed prior to use.

## Applications

- Western Blot (Transfected lysate)

Western Blot analysis of MRPS12 expression in transfected 293T cell line ([H00006183-T01](#)) by MRPS12 MaxPab polyclonal antibody.

Lane 1: MRPS12 transfected lysate(15.18 KDa).

Lane 2: Non-transfected lysate.

[Protocol Download](#)

## Gene Info — MRPS12

Entrez GeneID [6183](#)

GeneBank Accession# [NM\\_021107](#)

Protein Accession# [NP\\_066930](#)

Gene Name MRPS12

Gene Alias MPR-S12, MT-RPS12, RPMS12, RPS12, RPSM12

Gene Description mitochondrial ribosomal protein S12

Omim ID [603021](#)

Gene Ontology [Hyperlink](#)

**Gene Summary**

Mammalian mitochondrial ribosomal proteins are encoded by nuclear genes and help in protein synthesis within the mitochondrion. Mitochondrial ribosomes (mitoribosomes) consist of a small 28 S subunit and a large 39S subunit. They have an estimated 75% protein to rRNA composition compared to prokaryotic ribosomes, where this ratio is reversed. Another difference between mammalian mitoribosomes and prokaryotic ribosomes is that the latter contain a 5S rRNA. Among different species, the proteins comprising the mitoribosome differ greatly in sequence, and sometimes in biochemical properties, which prevents easy recognition by sequence homology. This gene encodes a 28S subunit protein that belongs to the ribosomal protein S12P family. The encoded protein is a key component of the ribosomal small subunit and controls the decoding fidelity and susceptibility to aminoglycoside antibiotics. The gene for mitochondrial seryl-tRNA synthetase is located upstream and adjacent to this gene, and both genes are possible candidates for the autosomal dominant deafness gene (DFNA4). Splice variants that differ in the 5' UTR have been found for this gene; all three variants encode the same protein. [provided by RefSeq]

**Other Designations** ribosomal protein, mitochondrial, S12