

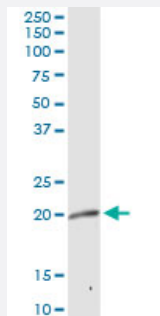
MaxPab®

## MRPL12 purified MaxPab rabbit polyclonal antibody (D01P)

Catalog # H00006182-D01P

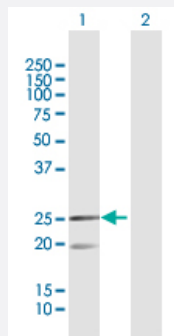
Size 100 ug

### Applications



#### Western Blot (Tissue lysate)

MRPL12 MaxPab rabbit polyclonal antibody. Western Blot analysis of MRPL12 expression in human kidney.

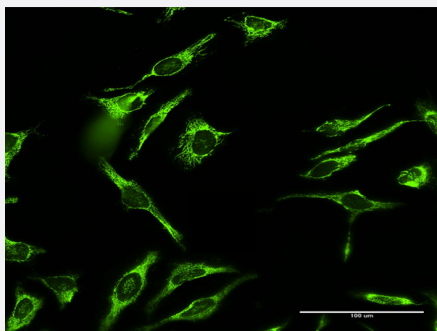


#### Western Blot (Transfected lysate)

Western Blot analysis of MRPL12 expression in transfected 293T cell line ([H00006182-T02](#)) by MRPL12 MaxPab polyclonal antibody.

Lane 1: MRPL12 transfected lysate(21.30 KDa).

Lane 2: Non-transfected lysate.



#### Immunofluorescence

Immunofluorescence of purified MaxPab antibody to MRPL12 on HeLa cell. [antibody concentration 10 ug/ml]

### Specification

#### Product Description

Rabbit polyclonal antibody raised against a full-length human MRPL12 protein.

Immunogen	MRPL12 (NP_002940.2, 1 a.a. ~ 198 a.a) full-length human protein.
Sequence	MLPAAARPLWGPC LGLRAAAFRLARRQVPCVCAVRHMRSSGHQRCEALAGAPLDNAPKEYPP KIQQLVQDIASLTLEISDLNELLKTKIQDVGLVPMGGVMSGAVPAAAAQEAVEEDIPIAKERTHF TVRLTEAKPVDKVKLIKEIKNYIQGINLVQAKKLVESLPQEIKANVAKAEAEKIKAALEAVGGTVVLE
Host	Rabbit
Reactivity	Human
Quality Control Testing	Antibody reactive against mammalian transfected lysate.
Storage Buffer	In 1x PBS, pH 7.4
Storage Instruction	Store at -20°C or lower. Aliquot to avoid repeated freezing and thawing.

## Applications

- Western Blot (Tissue lysate)

MRPL12 MaxPab rabbit polyclonal antibody. Western Blot analysis of MRPL12 expression in human kidney.

[Protocol Download](#)

- Western Blot (Transfected lysate)

Western Blot analysis of MRPL12 expression in transfected 293T cell line ([H00006182-T02](#)) by MRPL12 MaxPab polyclonal antibody.

Lane 1: MRPL12 transfected lysate(21.30 KDa).

Lane 2: Non-transfected lysate.

[Protocol Download](#)

- Immunofluorescence

Immunofluorescence of purified MaxPab antibody to MRPL12 on HeLa cell. [antibody concentration 10 ug/ml]

## Gene Info — MRPL12

Entrez GeneID	<a href="#">6182</a>
GeneBank Accession#	<a href="#">NM_002949</a>
Protein Accession#	<a href="#">NP_002940.2</a>
Gene Name	MRPL12

<b>Gene Alias</b>	5c5-2, FLJ60124, L12mt, MGC8610, MRP-L31/34, MRPL7, MRPL7/L12, RPML12
<b>Gene Description</b>	mitochondrial ribosomal protein L12
<b>Omim ID</b>	<a href="#">602375</a>
<b>Gene Ontology</b>	<a href="#">Hyperlink</a>
<b>Gene Summary</b>	<p>Mammalian mitochondrial ribosomal proteins are encoded by nuclear genes and help in protein synthesis within the mitochondrion. Mitochondrial ribosomes (mitoribosomes) consist of a small 28S subunit and a large 39S subunit. They have an estimated 75% protein to rRNA composition compared to prokaryotic ribosomes, where this ratio is reversed. Another difference between mammalian mitoribosomes and prokaryotic ribosomes is that the latter contain a 5S rRNA. Among different species, the proteins comprising the mitoribosome differ greatly in sequence, and sometimes in biochemical properties, which prevents easy recognition by sequence homology. This gene encodes a 39S subunit protein which forms homodimers. In prokaryotic ribosomes, two L7/L12 dimers and one L10 protein form the L8 protein complex. [provided by RefSeq]</p>
<b>Other Designations</b>	-