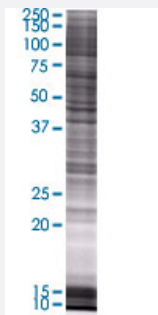


RPLP2 293T Cell Transient Overexpression Lysate(Denatured)

Catalog # H00006181-T01

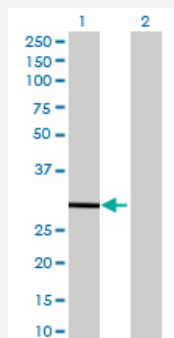
Size 100 uL

Applications



SDS-PAGE Gel

RPLP2 transfected lysate.



Western Blot

Lane 1: RPLP2 transfected lysate (12.76 KDa)

Lane 2: Non-transfected lysate.

Specification

Transfected Cell Line 293T

Plasmid pCMV-RPLP2 full-length

Host Human

Theoretical MW (kDa) 12.76

Quality Control Testing Transient overexpression cell lysate was tested with Anti-RPLP2 antibody ([H00006181-B01](#)) by Western Blots.
 SDS-PAGE Gel
 RPLP2 transfected lysate.
 Western Blot
 Lane 1: RPLP2 transfected lysate (12.76 KDa)
 Lane 2: Non-transfected lysate.

Storage Buffer	1X Sample Buffer (50 mM Tris-HCl, 2% SDS, 10% glycerol, 300 mM 2-mercaptoethanol, 0.01% Bromophenol blue)
Storage Instruction	Store at -80°C. Aliquot to avoid repeated freezing and thawing.

Applications

- Western Blot

Gene Info — RPLP2

Entrez GeneID	6181
GeneBank Accession#	NM_001004.3
Protein Accession#	NP_000995.1
Gene Name	RPLP2
Gene Alias	D11S2243E, MGC71408, P2, RPP2
Gene Description	ribosomal protein, large, P2
Omim ID	180530
Gene Ontology	Hyperlink

Gene Summary	<p>Ribosomes, the organelles that catalyze protein synthesis, consist of a small 40S subunit and a large 60S subunit. Together these subunits are composed of 4 RNA species and approximately 80 structurally distinct proteins. This gene encodes a ribosomal phosphoprotein that is a component of the 60S subunit. The protein, which is a functional equivalent of the E. coli L7/L12 ribosomal protein, belongs to the L12P family of ribosomal proteins. It plays an important role in the elongation step of protein synthesis. Unlike most ribosomal proteins, which are basic, the encoded protein is acidic. Its C-terminal end is nearly identical to the C-terminal ends of the ribosomal phosphoproteins P0 and P1. The P2 protein can interact with P0 and P1 to form a pentameric complex consisting of P1 and P2 dimers, and a P0 monomer. The protein is located in the cytoplasm. As is typical for genes encoding ribosomal proteins, there are multiple processed pseudogenes of this gene dispersed through the genome. [provided by RefSeq]</p>
--------------	---

Other Designations	60S acidic ribosomal protein P2 acidic ribosomal phosphoprotein P2 ribosomal protein P2
--------------------	---

Pathway

- [Ribosome](#)