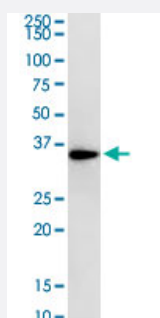


# RPLP0 monoclonal antibody (M01), clone 1B4

Catalog # H00006175-M01

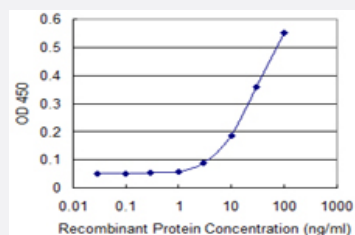
Size 100 ug

## Applications



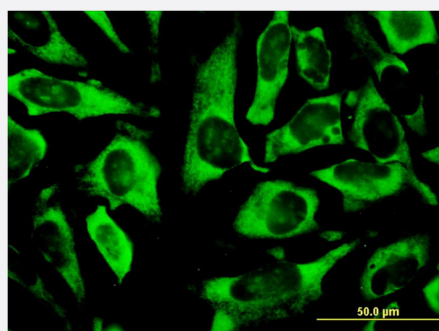
### Western Blot (Cell lysate)

RPLP0 monoclonal antibody (M01), clone 1B4. Western Blot analysis of RPLP0 expression in HeLa.



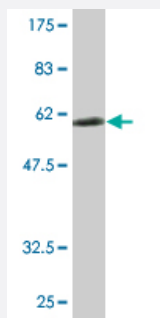
### Sandwich ELISA (Recombinant protein)

Detection limit for recombinant GST tagged RPLP0 is 1 ng/ml as a capture antibody.



### Immunofluorescence

Immunofluorescence of monoclonal antibody to RPLP0 on HeLa cell . [antibody concentration 10 ug/ml]



Western Blot detection against Immunogen (60.61 KDa) .

## Specification

<b>Product Description</b>	Mouse monoclonal antibody raised against a full-length recombinant RPLP0.
<b>Immunogen</b>	RPLP0 (AAH15173, 1 a.a. ~ 317 a.a) full-length recombinant protein with GST tag. MW of the GST tag alone is 26 KDa.
<b>Sequence</b>	MPREDRATWKSNYFLKIIQLLDDYPKCFIVGADNVGSKQMQQIRMSLRGKAVVLMGKNTMMRKAI RGHLENNPALEKLLPHIRGNVGFVFTKEDLTEIRDMLLANKVPAAARAGAIAPCEVTVPAQNTGLG PEKTSFFQALGITTKISRGTEILSDVQLIKTGDKVGASEATLLNMLNISPFSFGLVIQQVFDNGSYNP EVLDTTEETLHSRFLGVRNVASVCLQIGYPTVASVPHSIINGYKRVLALSVETDYTEPLAEKVKAFL ADPSAFVAAAPVAAAATTAAPAAAAAPAKVEAKEESESEDEDMGFGLFD
<b>Host</b>	Mouse
<b>Reactivity</b>	Human
<b>Isotype</b>	IgG2a Kappa
<b>Quality Control Testing</b>	Antibody Reactive Against Recombinant Protein. Western Blot detection against Immunogen (60.61 KDa) .
<b>Storage Buffer</b>	In 1x PBS, pH 7.4
<b>Storage Instruction</b>	Store at -20°C or lower. Aliquot to avoid repeated freezing and thawing.

## Applications

- Western Blot (Cell lysate)

RPLP0 monoclonal antibody (M01), clone 1B4. Western Blot analysis of RPLP0 expression in HeLa.

[Protocol Download](#)

- Western Blot (Recombinant protein)

[Protocol Download](#)

- Sandwich ELISA (Recombinant protein)

Detection limit for recombinant GST tagged RPLP0 is 1 ng/ml as a capture antibody.

[Protocol Download](#)

- ELISA

- Immunofluorescence

Immunofluorescence of monoclonal antibody to RPLP0 on HeLa cell . [antibody concentration 10 ug/ml]

## Gene Info — RPLP0

Entrez GeneID [6175](#)

GeneBank Accession# [BC015173](#)

Protein Accession# [AAH15173](#)

Gene Name RPLP0

Gene Alias L10E, MGC111226, MGC88175, P0, PRLP0, RPP0

Gene Description ribosomal protein, large, P0

Omim ID [180510](#)

Gene Ontology [Hyperlink](#)

**Gene Summary** Ribosomes, the organelles that catalyze protein synthesis, consist of a small 40S subunit and a large 60S subunit. Together these subunits are composed of 4 RNA species and approximately 80 structurally distinct proteins. This gene encodes a ribosomal protein that is a component of the 60S subunit. The protein, which is the functional equivalent of the E. coli L10 ribosomal protein, belongs to the L10P family of ribosomal proteins. It is a neutral phosphoprotein with a C-terminal end that is nearly identical to the C-terminal ends of the acidic ribosomal phosphoproteins P1 and P2. The P0 protein can interact with P1 and P2 to form a pentameric complex consisting of P1 and P2 dimers, and a P0 monomer. The protein is located in the cytoplasm. Transcript variants derived from alternative splicing exist; they encode the same protein. As is typical for genes encoding ribosomal proteins, there are multiple processed pseudogenes of this gene dispersed through the genome. [provided by RefSeq]

**Other Designations** 60S acidic ribosomal protein P0|acidic ribosomal phosphoprotein P0|ribosomal protein P0

## Pathway

- [Ribosome](#)