

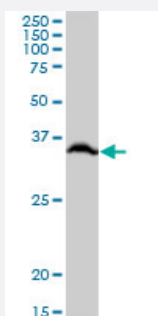
MaxPab®

RPLP0 purified MaxPab mouse polyclonal antibody (B01P)

Catalog # H00006175-B01P

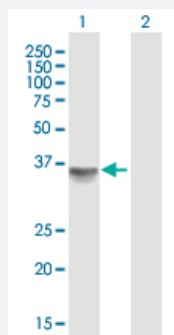
Size 50 ug

Applications



Western Blot (Cell lysate)

RPLP0 MaxPab polyclonal antibody. Western Blot analysis of RPLP0 expression in Jurkat.

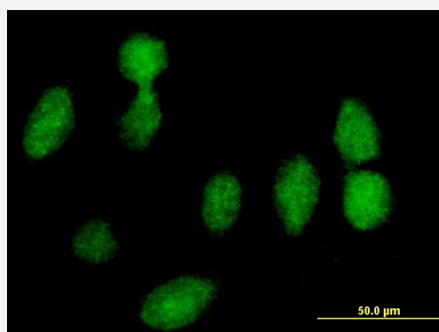


Western Blot (Transfected lysate)

Western Blot analysis of RPLP0 expression in transfected 293T cell line ([H00006175-T01](#)) by RPLP0 MaxPab polyclonal antibody.

Lane 1: RPLP0 transfected lysate(34.87 KDa).

Lane 2: Non-transfected lysate.



Immunofluorescence

Immunofluorescence of purified MaxPab antibody to RPLP0 on HeLa cell. [antibody concentration 10 ug/ml]

Specification

Product Description

Mouse polyclonal antibody raised against a full-length human RPLP0 protein.

Immunogen	RPLP0 (NP_000993.1, 1 a.a. ~ 317 a.a) full-length human protein.
Sequence	MPREDRATWKSNYFLKIIQLDDYPKCFIVGADNVGSKQMQQIRMSLRGKAVVLMGKNTMMRKAI RGHLENNPALEKLLPHIRGNVGFVFTKEDLTEIRDMLLANKVPAAARAGAIAPCEVTVPAQNTGLG PEKTSFFQALGITTKISRGTEILSDVQLIKTGDKVGASEATLLNMLNISPFSGFLVIQQVFDNGSYNP EVLDTTEETLHSRFLLEGVRNVASVCLQIGYPTVASVPHSIINGYKRVLALSVETDYTEFPLAEKVKAFL ADPSAFVAAAPVAAATTAAPAAAAAPAKVEAKEESESEDEDMGFGFLFD
Host	Mouse
Reactivity	Human
Quality Control Testing	Antibody reactive against mammalian transfected lysate.
Storage Buffer	In 1x PBS, pH 7.4
Storage Instruction	Store at -20°C or lower. Aliquot to avoid repeated freezing and thawing.

Applications

- Western Blot (Cell lysate)

RPLP0 MaxPab polyclonal antibody. Western Blot analysis of RPLP0 expression in Jurkat.

[Protocol Download](#)

- Western Blot (Transfected lysate)

Western Blot analysis of RPLP0 expression in transfected 293T cell line ([H00006175-T01](#)) by RPLP0 MaxPab polyclonal antibody.

Lane 1: RPLP0 transfected lysate(34.87 KDa).

Lane 2: Non-transfected lysate.

[Protocol Download](#)

- Immunofluorescence

Immunofluorescence of purified MaxPab antibody to RPLP0 on HeLa cell. [antibody concentration 10 ug/ml]

Gene Info — RPLP0

Entrez GeneID	6175
GeneBank Accession#	NM_001002.3
Protein Accession#	NP_000993.1

Gene Name	RPLP0
Gene Alias	L10E, MGC111226, MGC88175, P0, PRLP0, RPP0
Gene Description	ribosomal protein, large, P0
Omim ID	180510
Gene Ontology	Hyperlink
Gene Summary	<p>Ribosomes, the organelles that catalyze protein synthesis, consist of a small 40S subunit and a large 60S subunit. Together these subunits are composed of 4 RNA species and approximately 80 structurally distinct proteins. This gene encodes a ribosomal protein that is a component of the 60S subunit. The protein, which is the functional equivalent of the E. coli L10 ribosomal protein, belongs to the L10P family of ribosomal proteins. It is a neutral phosphoprotein with a C-terminal end that is nearly identical to the C-terminal ends of the acidic ribosomal phosphoproteins P1 and P2. The P0 protein can interact with P1 and P2 to form a pentameric complex consisting of P1 and P2 dimers, and a P0 monomer. The protein is located in the cytoplasm. Transcript variants derived from alternative splicing exist; they encode the same protein. As is typical for genes encoding ribosomal proteins, there are multiple processed pseudogenes of this gene dispersed through the genome. [provided by RefSeq]</p>
Other Designations	60S acidic ribosomal protein P0 acidic ribosomal phosphoprotein P0 ribosomal protein P0

Pathway

- [Ribosome](#)