

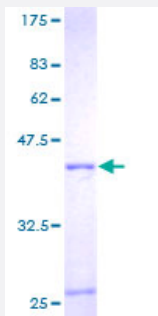
Full-Length

RPL36A (Human) Recombinant Protein (P01)

Catalog # H00006173-P01

Size 25 ug, 10 ug

Applications



Specification

Product Description	Human RPL36A full-length ORF (AAH01781, 1 a.a. - 106 a.a.) recombinant protein with GST-tag at N-terminal.
Sequence	MVNVPKTRRTFCKKCGKHQPHKVTQYKKGKDSLYAQGKRRYDRKQSGYGGQTKPIFRKKAKTTK KIVLRLECEPNCRSKRMLAIKRCKHFELGGDKKRKGQVIQF
Host	Wheat Germ (in vitro)
Theoretical MW (kDa)	37.40
Preparation Method	in vitro wheat germ expression system
Purification	Glutathione Sepharose 4 Fast Flow
Quality Control Testing	12.5% SDS-PAGE Stained with Coomassie Blue.
Storage Buffer	50 mM Tris-HCl, 10 mM reduced Glutathione, pH=8.0 in the elution buffer.
Storage Instruction	Store at -80°C. Aliquot to avoid repeated freezing and thawing.
Note	Best use within three months from the date of receipt of this protein.

Applications

- Enzyme-linked Immunoabsorbent Assay
- Western Blot (Recombinant protein)
- Antibody Production
- Protein Array

Gene Info — RPL36A

Entrez GeneID [6173](#)

GeneBank Accession# [BC001781](#)

Protein Accession# [AAH01781](#)

Gene Name RPL36A

Gene Alias L44L, MGC72020, MIG6, RPL44

Gene Description ribosomal protein L36a

Gene Ontology [Hyperlink](#)

Gene Summary Cytoplasmic ribosomes, organelles that catalyze protein synthesis, consist of a small 40S subunit and a large 60S subunit. Together these subunits are composed of 4 RNA species and approximately 80 structurally distinct proteins. This gene encodes a ribosomal protein that is a component of the 60S subunit. The protein, which shares sequence similarity with yeast ribosomal protein L44, belongs to the L44E (L36AE) family of ribosomal proteins. Although this gene has been referred to as ribosomal protein L44 (RPL44), its official name is ribosomal protein L36a (RPL36A). This gene and the human gene officially named ribosomal protein L36a-like (RPL36AL) encode nearly identical proteins; however, they are distinct genes. As is typical for genes encoding ribosomal proteins, there are multiple processed pseudogenes of this gene dispersed through the genome. [provided by RefSeq]

Other Designations 60S ribosomal protein L36a|60S ribosomal protein L44|L44-like ribosomal protein|OTTHUMP0000023680|dJ164F3.3 (ribosomal protein L44)|migration-inducing protein 6|ribosomal protein L36a homologue|ribosomal protein L44

Pathway

- [Ribosome](#)