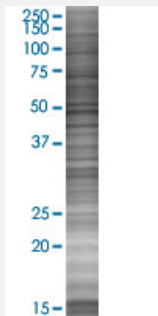


RPL37A 293T Cell Transient Overexpression Lysate(Denatured)

Catalog # H00006168-T01

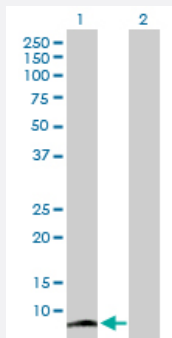
Size 100 uL

Applications



SDS-PAGE Gel

RPL37A transfected lysate.



Western Blot

Lane 1: RPL37A transfected lysate (10.23 KDa)

Lane 2: Non-transfected lysate.

Specification

Transfected Cell Line	293T
Plasmid	pCMV-RPL37A full-length
Host	Human
Theoretical MW (kDa)	10.23
Interspecies Antigen Sequence	Mouse (100); Rat (91)

Quality Control Testing

Transient overexpression cell lysate was tested with Anti-RPL37A antibody ([H00006168-B01](#)) by Western Blots.
SDS-PAGE Gel
RPL37A transfected lysate.
Western Blot
Lane 1: RPL37A transfected lysate (10.23 KDa)
Lane 2: Non-transfected lysate.

Storage Buffer

1X Sample Buffer (50 mM Tris-HCl, 2% SDS, 10% glycerol, 300 mM 2-mercaptoethanol, 0.01% Bromophenol blue)

Storage Instruction

Store at -80°C. Aliquot to avoid repeated freezing and thawing.

Applications

- Western Blot

Gene Info — RPL37A

Entrez GeneID[6168](#)**GeneBank Accession#**[BC016748](#)**Protein Accession#**[AAH16748](#)**Gene Name**

RPL37A

Gene Alias

MGC74786

Gene Description

ribosomal protein L37a

Gene Ontology[Hyperlink](#)**Gene Summary**

Ribosomes, the organelles that catalyze protein synthesis, consist of a small 40S subunit and a large 60S subunit. Together these subunits are composed of 4 RNA species and approximately 80 structurally distinct proteins. This gene encodes a ribosomal protein that is a component of the 60S subunit. The protein belongs to the L37AE family of ribosomal proteins. It is located in the cytoplasm. The protein contains a C4-type zinc finger-like domain. As is typical for genes encoding ribosomal proteins, there are multiple processed pseudogenes of this gene dispersed through the genome. [provided by RefSeq]

Other Designations

60S ribosomal protein L37a

Pathway

- [Ribosome](#)