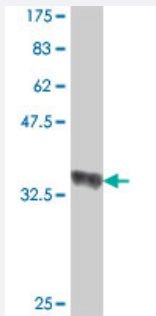


RPL37 polyclonal antibody (A01)

Catalog # H00006167-A01

Size 50 uL

Applications



Western Blot detection against Immunogen (36.78 KDa) .

Specification

Product Description	Mouse polyclonal antibody raised against a partial recombinant RPL37.
Immunogen	RPL37 (NP_000988, 1 a.a. ~ 97 a.a) partial recombinant protein with GST tag.
Sequence	MTKGTSSFGKRRNKTHLTCRRCGSKAYHLQKSTCGKCGYPAKRKRKYNWSAKAKRRNTTGTGR MRHLKIVYRRFRHGFREGTTPKPKRAAVAASSSS
Host	Mouse
Reactivity	Human
Quality Control Testing	Antibody Reactive Against Recombinant Protein. Western Blot detection against Immunogen (36.78 KDa) .
Storage Buffer	50 % glycerol
Storage Instruction	Store at -20°C or lower. Aliquot to avoid repeated freezing and thawing.

Applications

- Western Blot (Recombinant protein)

[Protocol Download](#)

- ELISA

Gene Info — RPL37

Entrez GeneID [6167](#)

GeneBank Accession# [NM_000997](#)

Protein Accession# [NP_000988](#)

Gene Name RPL37

Gene Alias DKFZp686G1699, MGC99572

Gene Description ribosomal protein L37

Omim ID [604181](#)

Gene Ontology [Hyperlink](#)

Gene Summary Ribosomes, the organelles that catalyze protein synthesis, consist of a small 40S subunit and a large 60S subunit. Together these subunits are composed of 4 RNA species and approximately 80 structurally distinct proteins. This gene encodes a ribosomal protein that is a component of the 60S subunit. The protein belongs to the L37E family of ribosomal proteins. It is located in the cytoplasm. The protein contains a C2C2-type zinc finger-like motif. As is typical for genes encoding ribosomal proteins, there are multiple processed pseudogenes of this gene dispersed through the genome. [provided by RefSeq]

Other Designations 60S ribosomal protein L37a

Pathway

- [Ribosome](#)